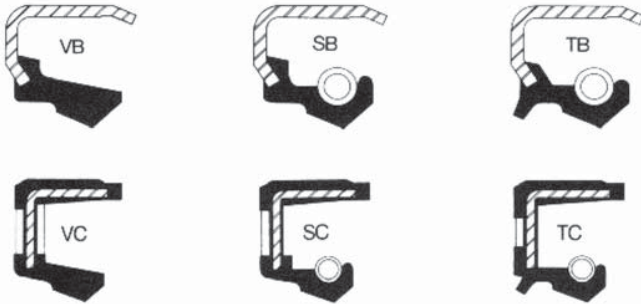
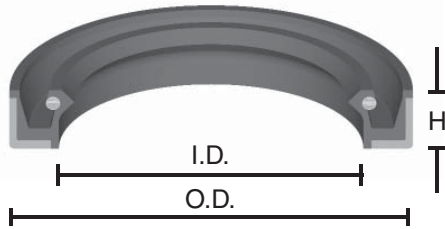


OIL SEALS

HydraPak Seals offers several variations of standard sized metal clad oil seals. Designed specifically to prevent oil or grease leakage at maximum pressures of 10 p.s.i., these seals are primarily for rotating shafts and temperatures up to 240° F.



SEAL INFORMATION

MATERIAL	RUBBER
TEMPERATURE RANGE	-40° TO +240° F
PRESSURE RANGE	10 PSI MAXIMUM
PART NUMBER	(Prefix) - (Size) - (Style)

Part Number	I.D.	O.D.	H	List Price
OS-0.31X0.62X0.15SC	5/16	5/8	5/32	\$ 5.34
OS-0.31X0.75X0.25VTF	5/16	3/4	1/4	8.03
OS-0.37X0.68X0.15VM	3/8	11/16	5/32	3.85
OS-0.37X0.75X0.25SB	3/8	3/4	1/4	4.22
OS-0.37X1.00X0.25SM	3/8	1	1/4	4.22
OS-0.43X0.62X0.12VC	7/16	5/8	1/8	3.85
OS-0.43X0.83X0.18VM	7/16	.836	3/16	3.64
OS-0.43X0.87X0.25SM	7/16	7/8	1/4	5.06
OS-0.43X0.87X0.25TB	7/16	7/8	1/4	7.60
OS-0.43X1.00X0.25TC	7/16	1	1/4	3.98
OS-0.43X1.00X0.25VM	7/16	1	1/4	3.83
OS-0.43X1.00X0.37SB	7/16	1	3/8	5.06
OS-0.50X0.68X0.09VC	1/2	11/16	3/32	3.17
OS-0.50X0.75X0.12VM	1/2	3/4	1/8	3.98
OS-0.50X0.75X0.16TB	1/2	3/4	.167	3.79
OS-0.50X0.87X0.12VC	1/2	7/8	1/8	4.33
OS-0.50X0.87X0.12VM	1/2	7/8	1/8	3.64
OS-0.50X0.87X0.25SC	1/2	7/8	1/4	3.41
OS-0.50X0.87X0.25TB	1/2	7/8	1/4	5.23
OS-0.50X0.87X0.25TEC	1/2	7/8	1/4	6.18
OS-0.50X0.87X0.31TBY	1/2	7/8	5/16	4.08
OS-0.50X1.00X0.25TB	1/2	1	1/4	3.82
OS-0.50X1.00X0.25TC	1/2	1	1/4	3.61
OS-0.50X1.00X0.25TCN	1/2	1	1/4	5.54

Part Number	I.D.	O.D.	H	List Price
OS-0.50X1.12X0.25SB	1/2	1-1/8	1/4	\$ 4.19
OS-0.50X1.12X0.25SC	1/2	1-1/8	1/4	3.79
OS-0.50X1.12X0.25TB	1/2	1-1/8	1/4	4.34
OS-0.50X1.25X0.25TC	1/2	1-1/4	1/4	4.90
OS-0.56X0.87X0.18TC	9/16	7/8	3/16	3.35
OS-0.56X1.00X0.25SB	9/16	1	1/4	4.74
OS-0.56X1.00X0.25TC	9/16	1	1/4	4.74
OS-0.56X1.12X0.25TB	9/16	1-1/8	1/4	5.15
OS-0.56X1.25X0.25TB	9/16	1-1/4	1/4	6.55
OS-0.62X0.81X0.09VC	5/8	13/16	3/32	4.42
OS-0.62X0.81X0.09VM	5/8	13/16	3/32	4.42
OS-0.62X0.87X0.12SM	5/8	7/8	1/8	4.08
OS-0.62X0.93X0.18VB	5/8	15/16	3/16	4.33
OS-0.62X1.00X0.12VMY	5/8	1	1/8	4.81
OS-0.62X1.00X0.25SM	5/8	1	1/4	4.55
OS-0.62X1.00X0.25TB	5/8	1	1/4	4.81
OS-0.62X1.00X0.25TC	5/8	1	1/4	3.79
OS-0.62X1.00X0.25TC	5/8	1	1/4	3.79
OS-0.62X1.12X0.25TB	5/8	1-1/8	1/4	4.12
OS-0.62X1.12X0.25TC	5/8	1-1/8	1/4	3.98
OS-0.62X1.12X0.25VTB	5/8	1-1/8	1/4	11.46
OS-0.62X1.12X0.31SC	5/8	1-1/8	5/16	3.90
OS-0.62X1.12X0.37TBY	5/8	1-1/8	3/8	4.74
OS-0.62X1.12X0.37TC	5/8	1-1/8	3/8	3.35
OS-0.62X1.25X0.25TC	5/8	1-1/4	1/4	3.73

OIL SEALS

Part Number	I.D.	O.D.	H	List Price
OS-0.62X1.37X0.25TB	5/8	1-3/8	1/4	\$ 4.45
OS-0.62X1.37X0.25VTB	5/8	1-3/8	1/4	11.97
OS-0.62X1.50X0.25SB-H	5/8	1-1/2	1/4	4.14
OS-0.65X1.12X0.25SC	21/32	1-1/8	1/4	1.68
OS-0.67X1.18X0.20SA	11/16	1-3/16	.203	5.46
OS-0.68X1.00X0.18VM	11/16	1	3/16	3.79
OS-0.68X1.06X0.18SM	11/16	1-1/16	3/16	4.45
OS-0.68X1.12X0.25SB	11/16	1-1/8	1/4	4.92
OS-0.68X1.12X0.25TC	11/16	1-1/8	1/4	3.98
OS-0.68X1.18X0.18SB	11/16	1-3/16	3/16	4.01
OS-0.68X1.25X0.25TZ	11/16	1-1/4	1/4	5.87
OS-0.68X1.25X0.31SB	11/16	1-1/4	5/16	4.92
OS-0.68X1.37X0.12VM-H	11/16	1-3/8	1/8	4.01
OS-0.68X1.37X0.31TC	11/16	1-3/8	5/16	4.08
OS-0.75X1.00X0.12TC	3/4	1	1/8	4.35
OS-0.75X1.00X0.12VC	3/4	1	1/8	4.05
OS-0.75X1.00X0.12VM	3/4	1	1/8	3.29
OS-0.75X1.00X0.15TC	3/4	1	5/32	3.95
OS-0.75X1.06X0.18TB	3/4	1-1/6	3/16	5.19
OS-0.75X1.12X0.15VC	3/4	1-1/8	5/32	3.83
OS-0.75X1.12X0.15VM	3/4	1-1/8	5/32	3.83
OS-0.75X1.12X0.18SZ	3/4	1-1/8	3/16	5.27
OS-0.75X1.12X0.18TB	3/4	1-1/8	3/16	5.11
OS-0.75X1.12X0.25TC	3/4	1-1/8	1/4	3.69
OS-0.75X1.18X0.25SB	3/4	1-3/16	1/4	3.98
OS-0.75X1.25X0.25SB	3/4	1-1/4	1/4	3.73
OS-0.75X1.25X0.25SC	3/4	1-1/4	1/4	4.18
OS-0.75X1.25X0.25TB	3/4	1-1/4	1/4	3.98
OS-0.75X1.25X0.25TC-G	3/4	1-1/4	1/4	4.74
OS-0.75X1.25X0.31TC	3/4	1-1/4	5/16	6.18
OS-0.75X1.25X0.31TZ	3/4	1-1/4	5/16	4.42
OS-0.75X1.25X0.31VTC	3/4	1-1/4	5/16	16.08
OS-0.75X1.31X0.25TB	3/4	1-5/16	1/4	6.96
OS-0.75X1.37X0.25PTC	3/4	1-3/8	1/4	6.18
OS-0.75X1.37X0.25TB	3/4	1-3/8	1/4	4.14
OS-0.75X1.50X0.25TB-H	3/4	1-1/2	1/4	4.34
OS-0.75X1.57X0.25TL	3/4	1.8	1/4	5.27
OS-0.75X1.75X0.25SB	3/4	1-3/4	1/4	5.41
OS-0.75X1.75X0.25VTL-H	3/4	1-3/4	1/4	15.79
OS-0.75X1.75X0.31TZ	.3/4	1-3/4	5/16	5.41
OS-0.75X1.87X0.25SB	3/4	1-7/8	1/4	6.78
OS-0.78X1.00X0.12VC	25/32	1	1/8	3.01
OS-0.78X1.12X0.18SB	25/32	1-1/8	3/16	3.76
OS-0.78X1.37X0.31SB	25/32	1-3/8	5/16	4.18
OS-0.78X1.75X0.31TZ	25/32	1-3/4	5/16	4.54
OS-0.81X1.06X0.12VC	13/16	1-1/16	1/8	3.79
OS-0.81X1.25X0.18SM	13/16	1-1/4	3/16	4.03
OS-0.81X1.37X0.25TB	13/16	1-3/8	1/4	6.26
OS-0.81X1.37X0.37SB-H	13/16	1-3/8	3/8	5.01
OS-0.81X1.62X0.25TB	13/16	1-5/8	1/4	5.80

Part Number	I.D.	O.D.	H	List Price
OS-0.87X1.12X0.12VM	7/8	1-1/8	1/8	\$ 3.22
OS-0.87X1.18X0.16VZ	7/8	1-3/16	.164	3.62
OS-0.87X1.25X.188SZ	7/8	1-1/4	3/16	4.03
OS-0.87X1.25X0.18SB	7/8	1-1/4	3/16	3.83
OS-0.87X1.25X0.18TB	7/8	1-1/4	3/16	4.18
OS-0.87X1.25X0.25SC	7/8	1-1/4	1/4	3.69
OS-0.87X1.37X0.25SB	7/8	1-3/8	1/4	3.80
OS-0.87X1.37X0.25TB	7/8	1-3/8	1/4	3.29
OS-0.87X1.37X0.25TBY	7/8	1-3/8	1/4	4.18
OS-0.87X1.37X0.25TC	7/8	1-3/8	1/4	4.14
OS-0.87X1.37X0.31SB	7/8	1-3/8	5/16	4.54
OS-0.87X1.37X0.31TA	7/8	1-3/8	5/16	4.54
OS-0.87X1.50X0.25TB-H	7/8	1-1/2	1/4	4.42
OS-0.87X1.50X0.25VTB	7/8	1-1/2	1/4	12.99
OS-0.87X1.50X0.31SC	7/8	1-1/2	5/16	4.22
OS-0.87X1.62X0.25TB	7/8	1-5/8	1/4	5.17
OS-0.87X1.82X0.37TB	7/8	1-53/64	3/8	6.51
OS-0.87X1.87X0.25SB	7/8	1-7/8	1/4	4.95
OS-0.93X1.37X0.25TB	15/16	1-3/8	1/4	4.07
OS-0.93X1.50X0.25SB-H	15/16	1-1/2	1/4	4.34
OS-0.93X1.50X0.25TB	31/32	1-1/2	1/4	5.19
OS-0.93X1.75X0.31TC	31/32	1-3/4	5/16	6.48
OS-0.96X1.62X0.25SB-H	31/32	1-5/8	1/4	5.41
OS-1.00X1.25X0.12VB	1	1-1/4	1/8	4.18
OS-1.00X1.25X0.25TC	1	1-1/4	1/4	4.62
OS-1.00X1.31X0.12VL	1	1-5/16	1/8	3.17
OS-1.00X1.37X0.25PSB	1	1-3/8	1/4	4.21
OS-1.00X1.37X0.25TBY	1	1-3/8	1/4	4.33
OS-1.00X1.43X0.25SC	1	1-7/16	1/4	5.44
OS-1.00X1.50X0.18VB	1	1-1/2	3/16	3.86
OS-1.00X1.50X0.25SB-H	1	1-1/2	1/4	3.76
OS-1.00X1.50X0.25TB	1	1-1/2	1/4	4.98
OS-1.00X1.50X0.25TB-H	1	1-1/2	1/4	4.98
OS-1.00X1.50X0.25TBY	1	1-1/2	1/4	3.83
OS-1.00X1.50X0.25TC	1	1-1/2	1/4	4.29
OS-1.00X1.50X0.31TC	1	1-1/2	5/16	4.39
OS-1.00X1.56X0.25VB-H	1	1-9/16	1/4	4.29
OS-1.00X1.57X0.25TB	1	1.8	1/4	4.98
OS-1.00X1.62X0.25SB	1	1-5/8	1/4	4.98
OS-1.00X1.62X0.25TB	1	1-5/8	1/4	5.90
OS-1.00X1.62X0.25TC	1	1-5/8	1/4	5.33
OS-1.00X1.62X0.25VB	1	1-5/8	1/4	3.76
OS-1.00X1.62X0.37SSTZN	1	1-5/8	3/8	7.15
OS-1.00X1.75X0.25SB	1	1-3/4	1/4	6.64
OS-1.00X1.75X0.25TB	1	1-3/4	1/4	5.16
OS-1.00X1.75X0.25VSB	1	1-3/4	1/4	15.71
OS-1.00X1.78X0.46VHY	1	1-25/32	5/16	4.66
OS-1.00X1.87X0.25SB	1	1-7/8	1/4	4.74
OS-1.00X1.87X0.25TB	1	1-7/8	1/4	4.81
OS-1.00X1.98X0.31TB	1	1.982	5/16	5.70

OIL SEALS

INCH

OIL SEALS

Part Number	I.D.	O.D.	H	List Price	Part Number	I.D.	O.D.	H	List Price
OS-1.00X2.00X0.25TB	1	2	1/4	\$ 5.54	OS-1.25X1.98X0.25TB	1-1/4	1.983	1/4	\$ 6.67
OS-1.00X2.06X0.37SC	1	2-1/16	3/8	5.51	OS-1.25X1.98X0.25VH	1-1/4	1.983	1/4	5.63
OS-1.00X2.43X0.37TC	1	2-7/16	3/8	6.36	OS-1.25X2.00X0.25TB	1-1/4	2	1/4	5.48
OS-1.06X1.50X0.25SB-H	1-1/16	1-1/2	1/4	5.06	OS-1.25X2.00X0.25VTB	1-1/4	2	1/4	17.88
OS-1.06X1.62X0.25SB	1-1/16	1-5/8	1/4	5.70	OS-1.25X2.00X0.31TC	1-1/4	2	5/16	7.96
OS-1.06X1.68X0.25SB	1-1/16	1-11/16	1/4	7.04	OS-1.25X2.00X0.37SB	1-1/4	2	3/8	5.99
OS-1.06X1.75X0.25SB	1-1/16	1-3/4	1/4	5.94	OS-1.25X2.00X0.43SB	1-1/4	2	7/16	8.64
OS-1.06X1.87X0.25SB	1-1/16	1-7/8	1/4	6.30	OS-1.25X2.062X0.25TB	1-1/4	2-1/16	1/4	7.04
OS-1.12X1.37X0.12VM	1-1/8	1-3/8	1/8	3.98	OS-1.25X2.12X0.25SB	1-1/4	2-1/8	1/4	5.79
OS-1.12X1.43X0.20VB	1-1/8	1-7/16	20	5.94	OS-1.25X2.12X0.25TB	1-1/4	2-1/8	1/4	5.70
OS-1.12X1.50X0.18VB	1-1/8	1-1/2	3/16	4.34	OS-1.25X2.25X0.25VB	1-1/4	2-1/4	1/4	6.08
OS-1.12X1.50X0.18VTC	1-1/8	1-1/2	3/16	19.26	OS-1.25X2.47X0.31SC	1-1/4	2.47	5/16	4.83
OS-1.12X1.50X0.25VZY	1-1/8	1-1/2	1/4	5.88	OS-1.28X2.00X0.37TB	1-9/32	2	3/8	7.36
OS-1.12X1.56X0.25PSL	1-1/8	1-9/16	1/4	5.88	OS-1.31X2.12X0.31TB	1-5/16	2-1/8	5/16	9.49
OS-1.12X1.56X0.25SB	1-1/8	1-9/16	1/4	4.90	OS-1.37X1.75X0.18SM	1-3/8	1-3/4	3/16	5.70
OS-1.12X1.62X0.25SB	1-1/8	1-5/8	1/4	4.86	OS-1.37X1.75X0.18VB	1-3/8	1-3/4	3/16	4.74
OS-1.12X1.62X0.25SC	1-1/8	1-5/8	1/4	5.03	OS-1.37X1.75X0.21TB	1-3/8	1-3/4	.219	10.16
OS-1.12X1.62X0.25TB	1-1/8	1-5/8	1/4	5.34	OS-1.37X1.82X0.31SB	1-3/8	1-53/64	5/16	5.15
OS-1.12X1.68X0.31TC	1-1/8	1-11/16	5/16	8.65	OS-1.37X1.87X0.25SB	1-3/8	1-7/8	1/4	5.48
OS-1.12X1.75X0.25SB	1-1/8	1-3/4	1/4	4.83	OS-1.37X1.93X0.25TB	1-3/8	1-15/16	1/4	5.28
OS-1.12X1.75X0.25TB	1-1/8	1-3/4	1/4	4.83	OS-1.37X1.93X0.25VB	1-3/8	1-15/16	1/4	4.74
OS-1.12X1.78X0.46TB	1-1/8	1-25/32	.469	5.07	OS-1.37X1.98X0.43TM	1-3/8	1.979	7/16	5.06
OS-1.12X1.82X0.25TB	1-1/8	1-53/64	1/4	5.51	OS-1.37X2.00X0.31VTB	1-3/8	2	5/16	14.50
OS-1.12X1.82X0.25TC	1-1/8	1-53/64	1/4	4.94	OS-1.37X2.00X0.37TA	1-3/8	2	3/8	6.75
OS-1.12X1.87X0.25TB	1-1/8	1-7/8	1/4	5.25	OS-1.37X2.12X0.31TB	1-3/8	2-1/8	5/16	4.56
OS-1.12X2.00X0.25SB	1-1/8	2	1/4	5.34	OS-1.37X2.12X0.31TC	1-3/8	2-1/8	5/16	4.02
OS-1.12X2.00X0.37TB	1-1/8	2	3/8	5.63	OS-1.37X2.12X0.43SA	1-3/8	2-1/8	7/16	6.78
OS-1.12X2.12X0.31SB	1-1/8	2-1/8	5/16	5.47	OS-1.37X2.25X0.31TB	1-3/8	2-1/4	5/16	7.93
OS-1.15X1.68X0.31TC	1-5/32	1-11/16	5/16	5.70	OS-1.37X2.37X0.31TB	1-3/8	2-3/8	5/16	6.36
OS-1.18X1.68X0.25SB	1-3/16	1-11/16	1/4	4.90	OS-1.37X2.44X0.31TB	1-3/8	2.441	5/16	7.99
OS-1.18X1.87X0.25SB	1-3/16	1-7/8	1/4	6.18	OS-1.43X1.87X0.18VB	1-7/16	1-7/8	3/16	19.82
OS-1.18X2.00X0.25TB	1-3/16	2	1/4	5.34	OS-1.43X1.87X0.25VTC	1-7/16	1-7/8	1/4	11.91
OS-1.25X1.50X0.12VB	1-1/4	1-1/2	1/8	3.98	OS-1.43X2.00X0.31TC	1-7/16	2	5/16	5.37
OS-1.25X1.50X0.12VC	1-1/4	1-1/2	1/8	3.98	OS-1.43X2.12X0.37SC	1-7/16	2-1/8	3/8	5.37
OS-1.25X1.62X0.18SB	1-1/4	1-5/8	3/16	4.67	OS-1.43X2.25X0.31TB	1-7/16	2-1/4	5/16	6.39
OS-1.25X1.62X0.18SM	1-1/4	1-5/8	3/16	6.59	OS-1.43X2.37X0.31TB	1-7/16	2-3/8	5/16	6.78
OS-1.25X1.62X0.25TC	1-1/4	1-5/8	1/4	5.55	OS-1.50X1.87X0.25SB	1-1/2	1-7/8	1/4	5.48
OS-1.25X1.68X0.18VB	1-1/4	1-11/16	3/16	5.70	OS-1.50X1.87X0.25TB	1-1/2	1-7/8	1/4	6.14
OS-1.25X1.68X0.25SB	1-1/4	1-11/16	1/4	5.94	OS-1.50X1.87X0.25VB	1-1/2	1-7/8	1/4	4.45
OS-1.25X1.68X0.25SC	1-1/4	1-11/16	1/4	5.70	OS-1.50X1.98X0.18VB	1-1/2	1.983	3/16	4.67
OS-1.25X1.68X0.25TC	1-1/4	1-11/16	1/4	5.55	OS-1.50X1.98X0.25TB	1-1/2	1.983	1/4	4.95
OS-1.25X1.68X0.25TF	1-1/4	1-11/16	1/4	9.01	OS-1.50X1.99X0.25KB	1-1/2	1.989	1/4	5.88
OS-1.25X1.68X0.31TB	1-1/4	1-11/16	.313	6.64	OS-1.50X2.00X0.25VB	1-1/2	2	1/4	5.32
OS-1.25X1.75X0.25TB	1-1/4	1-3/4	1/4	5.03	OS-1.50X2.00X0.31TB	1-1/2	2	5/16	5.48
OS-1.25X1.75X0.25TBY	1-1/4	1-3/4	1/4	6.38	OS-1.50X2.12X0.31TB	1-1/2	2-1/8	5/16	7.56
OS-1.25X1.75X0.25TL-H	1-1/4	1-3/4	1/4	5.47	OS-1.50X2.25X0.25VH	1-1/2	2-1/4	1/4	5.70
OS-1.25X1.75X0.25VHY	1-1/4	1-3/4	1/4	4.45	OS-1.50X2.25X0.31SB	1-1/2	2-1/4	5/16	7.15
OS-1.25X1.87X0.25TB	1-1/4	1-7/8	1/4	5.03	OS-1.50X2.25X0.31TB	1-1/2	2-1/4	5/16	6.30
OS-1.25X1.87X0.25VTB	1-1/4	1-7/8	1/4	14.79	OS-1.50X2.25X0.31VTB-H	1-1/2	2-1/4	5/16	17.57
OS-1.25X1.97X0.25TC	1-1/4	1.979	1/4	5.25	OS-1.50X2.37X0.25VH	1-1/2	2-3/8	1/4	5.09

OIL SEALS

Part Number	I.D.	O.D.	H	List Price
OS-1.50X2.37X0.31TB	1-1/2	2-3/8	5/16	\$ 5.06
OS-1.50X2.37X0.31TB-H	1-1/2	2-3/8	5/16	8.28
OS-1.50X2.50X0.31SB	1-1/2	2-1/2	5/16	5.46
OS-1.50X2.50X0.31TB	1-1/2	2-1/2	5/16	7.04
OS-1.50X2.75X0.31SB	1-1/2	2-3/4	5/16	10.52
OS-1.56X2.12X0.31SB	1-9/16	2-1/8	5/16	7.15
OS-1.56X2.37X0.31TB	1-9/16	2-3/8	5/16	6.74
OS-1.56X2.43X0.37TB	1-9/16	2-7/16	3/8	6.00
OS-1.62X2.00X0.25SB	1-5/8	2	1/4	5.09
OS-1.62X2.12X0.25SB	1-5/8	2-1/8	1/4	6.96
OS-1.62X2.37X0.31TB	1-5/8	2-3/8	5/16	5.95
OS-1.62X2.37X0.37TC	1-5/8	2-3/8	3/8	7.99
OS-1.62X2.43X0.31TB	1-5/8	2-7/16	5/16	6.67
OS-1.62X2.50X0.31SB	1-5/8	2-1/2	5/16	6.51
OS-1.62X2.50X0.31TB	1-5/8	2-1/2	5/16	6.70
OS-1.71X2.56X0.50TB	1-23/32	2-9/16	1/2	6.70
OS-1.75X2.12X0.18SB	1-3/4	2-1/8	3/16	7.96
OS-1.75X2.25X0.18VB	1-3/4	2-1/4	3/16	5.95
OS-1.75X2.25X0.31SB	1-3/4	2-1/4	5/16	7.82
OS-1.75X2.31X0.25TC	1-3/4	2-5/16	1/4	6.90
OS-1.75X2.37X0.31TB	1-3/4	2-3/8	5/16	5.95
OS-1.75X2.43X0.31TB	1-3/4	2-7/16	5/16	6.70
OS-1.75X2.43X0.31TC	1-3/4	2-7/16	5/16	6.70
OS-1.75X2.50X0.31TB	1-3/4	2-1/2	5/16	8.42
OS-1.75X2.50X0.37VTB	1-3/4	2-1/2	5/16	20.01
OS-1.75X2.50X0.31TC	1-3/4	2-1/2	3/8	18.32
OS-1.75X2.56X0.31SB	1-3/4	2-9/16	5/16	8.17
OS-1.75X2.56X0.31TB	1-3/4	2-9/16	5/16	7.17
OS-1.75X2.62X0.31TB	1-3/4	2-5/8	5/16	7.15
OS-1.75X2.68X0.31SL-H	1-3/4	2.686	5/16	8.81
OS-1.75X2.71X0.36VHY	1-3/4	2-23/32	.359	5.75
OS-1.75X2.75X0.31TB	1-3/4	2-3/4	5/16	7.30
OS-1.75X2.87X0.31SB	1-3/4	2-7/8	5/16	9.04
OS-1.75X3.00X0.37TB	1-3/4	3	3/8	8.20
OS-1.87X2.50X0.25VHY	1-7/8	2-1/2	1/4	5.79
OS-1.87X2.50X0.31SB	1-7/8	2-1/2	5/16	6.27
OS-1.87X2.62X0.31TB	1-7/8	2-5/8	5/16	6.51
OS-1.87X2.62X0.31TB-H	1-7/8	2-5/8	5/16	6.75
OS-1.87X2.87X0.31TB	1-7/8	2-7/8	5/16	8.32
OS-1.93X2.68X0.31TL-H	1-15/16	2-11/16	5/16	8.81
OS-2.00X2.50X0.25TC	2	2-1/2	1/4	8.23
OS-2.00X2.50X0.25VB	2	2-1/2	1/4	6.78
OS-2.00X2.62X0.25VHY	2	2-5/8	1/4	6.75
OS-2.00X2.62X0.31TB	2	2-5/8	5/16	6.78
OS-2.00X2.68X0.37SB	2	2-11/16	3/8	6.63
OS-2.00X2.71X0.37TB	2	2-23/32	3/8	8.28
OS-2.00X2.75X0.18VM	2	2-3/4	3/16	7.12
OS-2.00X2.75X0.31TB	2	2-3/4	5/16	7.10
OS-2.00X2.75X0.31TC	2	2-3/4	5/16	7.08
OS-2.00X2.87X0.31TA	2	2-7/8	5/16	9.08

Part Number	I.D.	O.D.	H	List Price
OS-2.00X3.00X0.25SB	2	3	1/4	\$ 7.88
OS-2.00X3.00X0.31TB	2	3	5/16	8.81
OS-2.00X3.00X0.37SA	2	3	3/8	10.01
OS-2.00X3.37X0.43TA	2	3-3/8	7/16	10.25
OS-2.12X2.75X0.50TB	2-1/8	2-3/4	1/2	7.21
OS-2.12X2.87X0.25VB	2-1/8	2-7/8	1/4	7.27
OS-2.12X2.87X0.43SA	2-1/8	2-7/8	7/16	10.25
OS-2.12X2.87X0.43TA	2-1/8	2-7/8	7/16	10.33
OS-2.12X2.87X0.43TB	2-1/8	2-7/8	7/16	8.56
OS-2.12X3.00X0.25VB	2-1/8	3	1/4	8.47
OS-2.12X3.00X0.37TA	2-1/8	3	3/8	10.40
OS-2.12X3.06X0.50TA	2-1/8	3-1/16	1/2	10.09
OS-2.18X3.00X0.37TB	2-3/16	3	3/8	8.64
OS-2.25X2.87X0.25VH	2-1/4	2-7/8	1/4	7.04
OS-2.25X3.00X0.25TA	2-1/4	3	1/4	8.17
OS-2.25X3.00X0.37SB	2-1/4	3	3/8	8.12
OS-2.25X3.00X0.37TB	2-1/4	3	3/8	8.64
OS-2.25X3.00X0.37VTB	2-1/4	3	3/8	14.62
OS-2.25X3.00X0.43TA	2-1/4	3	7/16	9.44
OS-2.25X3.18X0.43PTB	2-1/4	3-3/16	7/16	8.67
OS-2.25X3.25X0.25VH	2-1/4	3-1/4	1/4	11.91
OS-2.25X3.25X0.37TB	2-1/4	3-1/4	3/8	9.44
OS-2.37X3.00X0.25VC	2-3/8	3	1/4	7.30
OS-2.37X3.00X0.25VH	2-3/8	3	1/4	6.78
OS-2.37X3.12X0.37SB	2-3/8	3-1/8	3/8	8.89
OS-2.37X3.12X0.43TA	2-3/8	3-1/8	7/16	10.45
OS-2.37X3.35X0.46TA	2-3/8	3.35	15/32	14.35
OS-2.37X3.50X0.37SA	2-3/8	3-1/2	3/8	11.21
OS-2.50X3.00X0.25VB	2-1/2	3	1/4	8.78
OS-2.50X3.00X0.28WS	2-1/2	3	9/32	14.70
OS-2.50X3.06X0.25SM	2-1/2	3-1/16	1/4	10.45
OS-2.50X3.18X0.37TB	2-1/2	3-3/16	3/8	13.71
OS-2.50X3.25X0.37TB	2-1/2	3-1/4	3/8	5.30
OS-2.50X3.25X0.43TA	2-1/2	3-1/4	7/16	10.56
OS-2.50X3.50X0.25VH	2-1/2	3-1/2	1/4	8.20
OS-2.50X3.50X0.37TB	2-1/2	3-1/2	3/8	10.12
OS-2.50X3.50X0.40SB	2-1/2	3-1/2	13/32	8.82
OS-2.50X3.50X0.43TA	2-1/2	3-1/2	7/16	12.99
OS-2.56X3.75X0.43SA	2-9/16	3-3/4	7/16	12.51
OS-2.62X3.37X0.37TA	2-5/8	3-3/8	3/8	15.11
OS-2.62X3.50X0.37TB	2-5/8	3-1/2	3/8	10.36
OS-2.75X3.50X0.25VB	2-3/4	3-1/2	1/4	8.28
OS-2.75X3.50X0.37TB	2-3/4	3-1/2	3/8	10.58
OS-2.75X3.75X0.25VHY	2-3/4	3-3/4	1/4	9.16
OS-2.75X3.75X0.43TB	2-3/4	3-3/4	7/16	10.05
OS-2.81X3.87X0.43SA	2-13/16	3-7/8	7/16	13.71
OS-2.93X4.00X0.43TA	2-15/16	4	7/16	15.52
OS-3.00X3.75X0.37SB	3	3-3/4	3/8	9.28
OS-3.00X3.75X0.37TB	3	3-3/4	3/8	12.14
OS-3.00X3.75X0.43TA	3	3-3/4	7/16	12.87

OIL SEALS

INCH

OIL SEALS

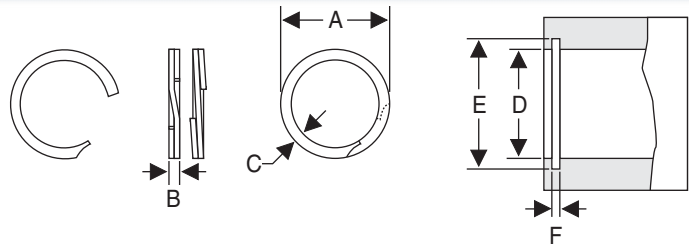
Part Number	I.D.	O.D.	H	List Price	Part Number	I.D.	O.D.	H	List Price
OS-3.00X4.00X0.37TB	3	4	3/8	\$ 10.45	OS-3.75X4.75X0.43STA	3-3/4	4-3/4	7/16	\$ 23.99
OS-3.00X4.00X0.43SA	3	4	7/16	12.42	OS-3.75X5.00X0.37TB	3-3/4	5	3/8	16.36
OS-3.00X4.00X0.43TA	3	4	7/16	13.61	OS-3.87X5.25X0.43TA	3-7/8	5-1/4	7/16	21.87
OS-3.12X4.00X0.37TB	3-1/8	4	3/8	10.85	OS-4.00X5.00X0.37SB	4	5	3/8	14.23
OS-3.25X4.00X0.37PTB	3-1/4	4	3/8	13.83	OS-4.00X5.00X0.43TA	4	5	7/16	20.38
OS-3.25X4.00X0.46TA	3-1/4	4	7/16	18.89	OS-4.00X5.25X0.43SA	4	5-1/4	7/16	20.15
OS-3.25X4.25X0.37TB	3-1/4	4-1/4	3/8	12.02	OS-4.00X5.37X0.50TA	4	5-3/8	1/2	22.19
OS-3.25X4.25X0.43TA	3-1/4	4-1/4	7/16	15.34	OS-4.25X5.25X0.37TB	4-1/4	5-1/4	3/8	17.12
OS-3.25X4.50X0.43TA	3-1/4	4-1/2	7/16	16.80	OS-4.50X5.50X0.50TA	4-1/2	5-1/2	1/2	30.38
OS-3.37X4.12X0.37TB	3-3/8	4-1/8	3/8	14.23	OS-4.50X6.12X0.56SA	4-1/2	6-1/8	9/16	32.28
OS-3.37X4.37X0.43TA	3-3/8	4-3/8	7/16	17.12	OS-5.00X6.00X0.50TA	5	6	1/2	32.97
OS-3.50X4.12X0.25VB	3-1/2	4-1/8	1/4	10.13	OS-5.00X6.25X0.50SA	5	6-1/4	1/2	34.41
OS-3.50X4.12X0.32WS	3-1/2	4-1/8	21/64	22.03	OS-5.50X6.50X0.50SA	5-1/2	6-1/2	1/2	44.12
OS-3.50X4.37X0.37TB	3-1/2	4-3/8	3/8	17.04	OS-5.62X6.62X0.50SA-H	5-5/8	6-5/8	1/2	36.58
OS-3.50X4.50X0.43SA	3-1/2	4-1/2	7/16	15.44	OS-6.37X7.87X0.56H	6-3/8	7-7/8	9/16	53.77
OS-3.50X4.75X0.25VH	3-1/2	4-3/4	1/4	21.70	OS-7.00X8.00X0.50TC	7	8	1/2	103.45
OS-3.68X4.50X0.43TA	3-11/16	4-1/2	7/16	17.81	OS-7.92X9.18X0.68Y	7.927	9-3/16	11/16	123.14

We offer super-fast **Match Up Service** on product you need in a hurry. Send us the parts you need. We will match them up and ship them back to you, in most cases the same day we receive them.

SPIRAL INTERNAL RETAINER RINGS

RETAINER RINGS

SPIRAL RETAINER CROSS REFERENCE	
HydraPak Seals Prefix	Ramsey Spirolox Prefix
VH-	UR-
WH-	RR-
WHM-	RRN-
WHT-	RRT-



Part Number	A Free OD	B Thickness	C Radial Wall	D Housing Dia.	E Groove Dia.	F Groove Width	List Price
WHM-50	.538	.035	.045	.500	.530	.039	\$ 0.63
WH-62	.658	.025	.045	.625	.651	.030	0.60
WHM-62	.675	.035	.055	.625	.665	.039	0.68
WHT-68	.730	.035	.055	.688	.724	.039	0.57
WHM-68	.743	.035	.065	.688	.732	.039	0.81
WHM-75	.807	.035	.065	.750	.796	.039	0.89
WH-78	.821	.031	.065	.781	.812	.036	0.63
WH-87	.922	.031	.065	.875	.912	.036	0.64
WHM-87	.943	.042	.085	.875	.931	.046	0.89
WH-100	1.054	.037	.075	1.000	1.043	.042	0.66
WHM-100	1.080	.042	.085	1.000	1.066	.046	1.60
WH-112	1.180	.037	.075	1.125	1.167	.042	0.66
WHM-112	1.205	.050	.103	1.125	1.197	.056	1.69
WH-125	1.312	.043	.085	1.250	1.298	.048	0.69
WHM-125	1.339	.050	.103	1.250	1.330	.056	1.82
WH-128	1.342	.043	.085	1.281	1.329	.048	0.72
WHT-131	1.395	.050	.093	1.312	1.385	.056	0.92
VH-137	1.433	.025	.088	1.375	1.419	.031	0.69
WH-137	1.442	.043	.095	1.375	1.427	.048	1.05
WHM-137	1.475	.050	.118	1.375	1.461	.056	1.82
VH-150	1.559	.025	.088	1.500	1.544	.031	0.86
WH-150	1.567	.043	.095	1.500	1.552	.048	1.24
WHT-150	1.591	.050	.108	1.500	1.580	.056	1.22
WHM-150	1.605	.050	.118	1.500	1.594	.056	1.91
WH-156	1.634	.049	.108	1.562	1.617	.056	1.41
WHM-156	1.675	.062	.128	1.562	1.658	.068	2.20
VH-162	1.701	.031	.118	1.625	1.682	.039	0.86
WH-162	1.701	.049	.108	1.625	1.684	.056	3.13
WHT-162	1.727	.062	.113	1.625	1.715	.068	1.41
WH-175	1.834	.049	.118	1.750	1.813	.056	1.41
WHT-175	1.858	.062	.118	1.750	1.845	.068	1.80
WHM-175	1.876	.062	.128	1.750	1.858	.068	4.04
VH-187	1.953	.031	.118	1.875	1.932	.039	1.09
WH-187	1.960	.049	.118	1.875	1.942	.056	1.80
WHT-187	1.989	.062	.128	1.875	1.975	.068	2.14
VH-200	2.079	.031	.118	2.000	2.057	.039	1.16
WH-200	2.091	.049	.128	2.000	2.071	.056	2.08
WHT-200	2.125	.062	.138	2.000	2.110	.068	2.14
WH-204	2.138	.049	.128	2.047	2.118	.056	2.22
WHM-200	2.142	.062	.158	2.000	2.122	.068	4.21

INCH

SPIRAL INTERNAL RETAINER RINGS

Part Number	A Free OD	B Thickness	C Radial Wall	D Housing Dia.	E Groove Dia.	F Groove Width	List Price
VH-206	2.162	.031	.158	2.062	2.18	.039	\$ 1.70
WHT-206	2.190	.078	.141	2.062	2.175	.086	5.92
WHM-206	2.201	.078	.168	2.062	2.186	.086	5.75
WHM-218	2.334	.078	.168	2.188	2.318	.086	5.75
VH-225	2.352	.031	.158	2.250	2.326	.039	2.22
WHT-225	2.386	.078	.141	2.250	2.370	.086	2.78
WHM-225	2.399	.078	.168	2.250	2.382	.086	5.77
WH-231	2.413	.049	.138	2.312	2.390	.056	2.22
VH-231	2.415	.031	.158	2.312	2.388	.039	7.90
WH-237	2.476	.049	.138	2.375	2.453	.056	2.22
VH-243	2.541	.031	.158	2.437	2.513	.039	2.69
WHT-244	2.588	.078	.188	2.440	2.570	.086	2.78
VH-250	2.605	.031	.158	2.5	2.576	.039	1.64
WH-250	2.606	.049	.148	2.500	2.582	.056	2.94
WHT-250	2.653	.078	.188	2.500	2.635	.086	3.71
WHM-250	2.667	.078	.200	2.500	2.648	.086	6.44
WHT-253	2.687	.078	.188	2.530	2.668	.086	3.71
WHT-256	2.720	.093	.188	2.562	2.834	.103	5.04
WHM-256	2.733	.093	.225	2.562	2.714	.103	5.92
VH-281	2.920	.031	.158	2.812	2.888	.039	4.29
VH-281SS	2.920	.031	.158	2.812	2.888	.039	4.81
WHT-275	2.921	.093	.188	2.750	2.900	.103	4.28
WH-283	2.954	.049	.168	2.834	2.928	.056	3.14
WH-287	2.995	.049	.168	2.875	2.969	.056	4.28
WHT-283	3.009	.093	.188	2.834	2.987	.103	4.39
WHM-283	3.027	.093	.225	2.834	3.006	.103	7.92
VH-300	3.110	.031	.158	3.000	3.076	.039	1.73
WH-300	3.122	.061	.168	3.000	3.096	.068	3.04
WHT-300	3.188	.093	.188	3.000	3.165	.103	4.39
WHM-300	3.204	.093	.225	3.000	3.182	.103	8.40
WHT-312	3.318	.111	.250	3.125	3.295	.120	6.47
WH-325	3.379	.061	.178	3.250	3.350	.068	4.50
WHT-325	3.450	.111	.250	3.250	3.426	.120	5.34
WH-350	3.636	.061	.188	3.500	3.606	.068	3.20
WHLA-368	3.684	.060	.168	3.500	3.665	.068	12.72
WH-356	3.703	.061	.198	3.562	3.672	.068	4.05
WHT-350	3.716	.111	.250	3.500	3.690	.120	8.36
WHL-371	3.725	.086	.187	3.500	3.705	.091	6.86
WHM-350	3.736	.111	.281	3.500	3.710	.120	8.40
WHL-378-HDC	3.780	.077	.132	3.625	3.755	.086	32.01
WHL-392	3.929	.093	.187	3.750	3.909	.103	17.55
WH-400	4.157	.061	.218	4.000	4.124	.068	4.47
WH-406	4.222	.061	.218	4.063	4.187	.068	5.71
WHT-400	4.248	.111	.250	4.000	4.220	.120	7.89
WHL-424	4.249	.090	.187	4.125	4.220	.098	13.56
WHM-400	4.270	.111	.312	4.000	4.240	.120	9.57
VH-412	4.279	.046	.225	4.125	4.235	.052	6.27
WHM-425	4.520	.111	.312	4.250	4.490	.120	13.89

SPIRAL INTERNAL RETAINER RINGS

Part Number	A Free OD	B Thickness	C Radial Wall	D Housing Dia.	E Groove Dia.	F Groove Width	List Price
WHM-433	4.600	.111	.312	4.330	4.570	.120	\$ 8.32
WH-450	4.674	.061	.238	4.500	4.636	.068	4.62
WH-472	4.903	.072	.250	4.724	4.864	.079	16.80
WHL-472	4.721	.093	.187	4.500	4.700	.098	7.63
WHL-473	4.732	.111	.250	4.500	4.712	.120	7.63
WHT-450	4.768	.111	.312	4.500	4.735	.120	10.95
WHM-450	4.770	.111	.312	4.500	4.740	.120	15.24
VH-462	4.784	.046	.225	4.625	4.735	.052	6.64
WHL-495	4.958	.093	.187	4.750	4.938	.103	20.56
WHT-475	5.028	.111	.312	4.750	4.995	.120	12.35
WH-500	5.185	.072	.250	5.000	5.144	.079	5.45
WHL-525	5.252	.090	.187	5.125	5.223	.098	38.34
WHT-500	5.295	.111	.312	5.000	5.260	.120	12.83
WH-525	5.436	.072	.250	5.250	5.393	.079	5.81
WH-550	5.693	.072	.250	5.550	5.647	.079	4.96
VH-550	5.694	.061	.225	5.500	5.638	.067	6.87
WH-551	5.703	.072	.250	5.511	5.658	.079	8.14
WHL-573	5.739	.111	.250	5.500	5.720	.120	7.81
WHL-574	5.740	.093	.187	5.500	5.720	.098	6.95
WHT-550	5.810	.127	.375	5.500	5.770	.139	21.92
WH-570	5.909	.072	.250	5.708	5.861	.079	11.55
VH-575	5.953	.061	.225	5.750	5.894	.067	7.44
WHL-595	5.956	.122	.187	5.750	5.936	.131	37.27
WH-600	6.202	.072	.250	6.000	6.153	.079	6.87
WHM-600	6.314	.127	.350	6.000	6.270	.139	16.67
WHT-600	6.314	.127	.375	6.000	6.270	.139	13.95
WH-612	6.349	.086	.312	6.125	6.297	.094	7.04
WHL-672	6.726	.111	.250	6.500	6.706	.120	6.06
WHL-683	6.830	.105	.204	6.500	6.800	.115	18.50
WHT-650	6.837	.165	.312	6.500	6.790	.174	43.94
WHT-662	6.973	.165	.312	6.625	6.925	.174	56.09
VH-675	6.988	.061	.265	6.750	6.919	.067	7.25
WH-700	7.239	.086	.312	7.000	7.182	.094	13.16
WHM-700	7.366	.156	.380	7.000	7.315	.174	42.18
WHL-724	7.249	.122	.245	6.875	7.229	.131	51.89
WHT-700	7.366	.165	.312	7.000	7.315	.174	31.68
WH-712	7.376	.086	.312	7.125	7.317	.094	13.10
WHL-770	7.700	.111	.250	7.500	7.680	.120	8.00
WH-750	7.754	.086	.312	7.500	7.692	.094	13.81
WHL-849	8.493	.122	.245	8.125	8.473	.131	69.22
WHL-871	8.710	.111	.250	8.500	8.690	.120	9.94
WHL-876	8.760	.111	.250	8.520	8.740	.120	16.64
WH-850	8.780	.086	.375	8.500	8.712	.094	21.28
WHL-992	9.927	.108	.250	9.625	9.907	.115	29.14
WHL-1013	10.120	.108	.250	10.00	10.100	.115	41.22
WHT-975	10.260	.189	.375	9.750	10.189	.209	47.94
WHT-1050	11.072	.189	.375	10.500	10.970	.209	83.55

RETAINER RINGS

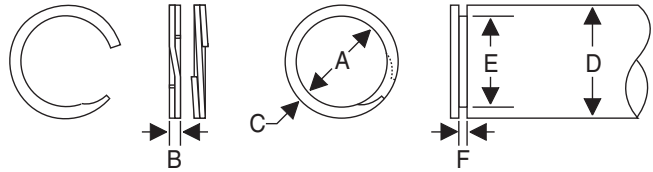


INCH

SPIRAL EXTERNAL RETAINER RINGS

SPIRAL RETAINER CROSS REFERENCE

HydraPak Seals Prefix	Ramsey Spirolox Prefix
VS-	US-
WS-	RS-
WST-	RSN-
WSM-	RST-



Part Number	A Free OD	B Thickness	C Radial Wall	D Shaft Dia.	E Groove Dia.	F Groove Width	List Price
WSM-50	.464	.035	.050	.500	.468	.039	\$ 0.71
WSM-62	.583	.035	.055	.625	.588	.039	0.80
WSM-75	.698	.042	.065	.750	.704	.046	1.54
WSM-87	.814	.042	.075	.875	.821	.046	1.70
WST-93	.886	.042	.075	.938	.894	.046	1.32
WSM-100	.932	.042	.085	1.000	.940	.046	1.74
WST-106	1.005	.050	.088	1.062	1.015	.056	1.37
WSM-112	1.047	.050	.103	1.125	1.059	.056	1.74
WSM-125	1.163	.050	.103	1.250	1.176	.056	1.91
WS-131	1.251	.043	.095	1.312	1.264	.048	0.91
WSM-137	1.277	.050	.118	1.375	1.291	.056	1.91
WS-137	1.308	.043	.095	1.375	1.323	.048	0.91
WS-143	1.370	.043	.095	1.437	1.385	.048	1.13
WSM-150	1.390	.050	.118	1.500	1.406	.056	2.02
WST-162	1.537	.062	.118	1.625	1.550	.068	1.92
VS-162	1.550	.031	.118	1.625	1.568	.039	0.51
WST-168	1.598	.062	.118	1.687	1.610	.068	3.33
WSM-175	1.633	.062	.128	1.750	1.650	.068	2.03
WST-175	1.657	.062	.118	1.750	1.670	.068	3.11
WS-175	1.673	.049	.118	1.750	1.691	.056	1.68
WST-187	1.774	.062	.123	1.875	1.790	.068	3.15
VS-187	1.798	.031	.118	1.875	1.818	.039	0.63
WSM-200	1.867	.062	.158	2.000	1.886	.068	5.34
WS-196	1.882	.049	.128	1.969	1.871	.056	1.80
WS-206	1.971	.049	.128	2.062	1.992	.056	3.70
WS-225	2.153	.049	.138	2.250	2.176	.056	2.31
WS-231	2.211	.049	.138	2.312	2.340	.056	4.35
WS-236	2.261	.049	.138	2.362	2.284	.056	5.07
WST-250	2.366	.078	.188	2.500	2.385	.086	5.79
WS-250	2.394	.049	.148	2.500	2.418	.056	3.49
WST-262	2.485	.078	.188	2.625	2.505	.086	6.14
WS-268	2.572	.049	.158	2.688	2.5796	.056	3.74
WST-275	2.604	.093	.188	2.750	2.625	.103	5.77
WS-275	2.635	.049	.158	2.750	2.660	.056	3.74
WS-293	2.817	.049	.168	2.937	2.843	.056	4.89

SPIRAL EXTERNAL RETAINER RINGS

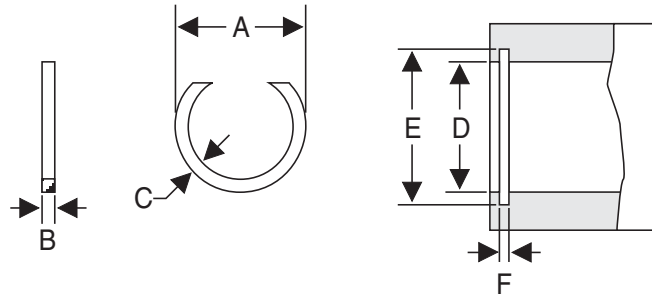
Part Number	A Free OD	B Thickness	C Radial Wall	D Shaft Dia.	E Groove Dia.	F Groove Width	List Price
WST-300	2.838	.093	.188	3.000	2.860	.103	\$ 5.84
WS-312	3.000	.061	.178	3.125	3.027	.068	4.92
WSM-325	3.054	.093	.225	3.250	3.076	.103	6.59
WS-325	3.121	.061	.178	3.250	3.150	.068	5.94
WS-334	3.210	.061	.188	3.343	3.239	.068	6.87
WST-343	3.254	.093	.188	3.437	3.280	.103	6.83
WST-350	3.315	.111	.250	3.500	3.340	.120	8.12
WS-362	3.483	.061	.198	3.625	3.515	.068	3.25
WST-375	3.550	.111	.250	3.750	3.577	.120	8.96
WST-400	3.787	.111	.250	4.000	3.756	.120	14.63
VS-400	3.867	.039	.188	4.000	3.908	.044	1.83
VS-412	3.973	.046	.225	4.125	4.015	.052	1.83
WST-425	4.032	.111	.250	4.250	4.065	.120	24.45
WST-450	4.280	.111	.250	4.500	4.310	.120	14.70
WS-450	4.326	.061	.238	4.500	4.364	.068	7.01
WST-500	4.755	.111	.250	5.000	4.790	.120	7.85
WS-525	5.064	.072	.250	5.25	5.107	.079	11.01
VS-525	5.067	.061	.225	5.250	5.119	.067	10.15
WS-537	5.187	.072	.250	5.375	5.228	.079	12.14
WS-550	5.308	.072	.250	5.500	5.353	.079	12.62
VS-625	6.033	.061	.265	6.250	6.094	.067	7.65
WST-675	6.182	.165	.312	6.750	6.465	.174	35.71

RETAINER RINGS



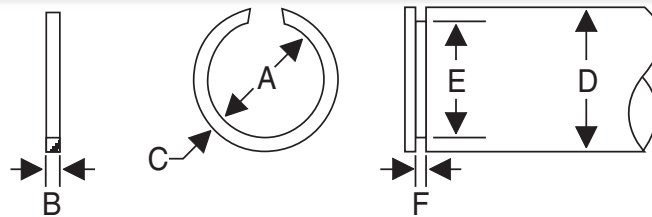
INCH

EATON NAN SERIES INTERNAL RETAINER RINGS



Part Number	A Free OD	B Thickness	C Radial Wall	D Housing Dia.	E Groove Dia.	F Groove Width	List Price
NAN-50	.530	.035	.040	.500	.524	.039	\$ 1.78
NAN-62	.670	.035	.048	.625	.657	.039	2.08
NAN-75	.799	.035	.048	.750	.786	.039	2.48
NAN-87	.934	.042	.062	.875	.919	.046	2.73
NAN-100	1.070	.042	.078	1.000	1.052	.046	2.87
NAN-112	1.202	.050	.093	1.125	1.181	.056	2.97
NAN-125	1.337	.050	.109	1.250	1.314	.056	3.17
NAN-137	1.472	.050	.109	1.375	1.447	.056	3.27
NAN-150	1.607	.050	.125	1.500	1.576	.056	3.33
NAN-156	1.668	.062	.125	1.562	1.642	.068	3.64

EATON XAN SERIES EXTERNAL RETAINER RINGS



Part Number	A Free ID	B Thickness	C Radial Wall	D Shaft Dia,	E Groove Dia.	F Groove Width	List Price
XAN-50	.464	.035	.048	.500	.474	.039	\$ 1.78
XAN-62	.586	.035	.062	.625	.597	.039	2.08
XAN-75	.703	.042	.062	.750	.716	.046	2.48
XAN-87	.820	.042	.078	.875	.835	.046	2.73
XAN-100	.941	.042	.093	1.000	.956	.046	2.87
XAN-112	1.060	.050	.093	1.125	1.075	.056	2.97
XAN-125	1.179	.050	.093	1.250	1.194	.056	3.17
XAN-137	1.291	.050	.109	1.375	1.390	.056	3.27
XAN-150	1.408	.050	.109	1.500	1.430	.056	3.33
XAN-275	2.594	.093	.187	2.750	2.624	.103	9.77
XAN-325	3.070	.093	.250	3.250	3.100	.103	15.83
XAN-375	3.541	.109	.250	3.750	3.576	.120	22.91

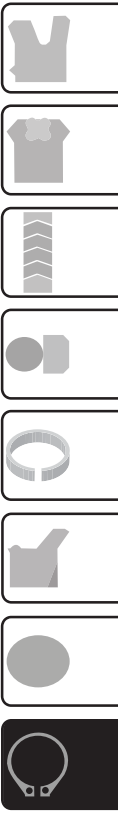


INTERNAL RETAINER RINGS (TRU-ARC TYPE)



Part Number	Housing Diameter	Ring O.D.	Ring Thickness	List Price	Part Number	Housing Diameter	Ring O.D.	Ring Thickness	List Price
300-025	.250	.280	.015	\$ 0.53	300-256	2.562	2.844	.093	\$ 3.28
300-045	.453	.498	.025	0.54	300-262	2.625	2.910	.093	5.27
300-050	.500	.548	.035	0.53	300-275	2.750	2.970	.093	3.56
300-062	.625	.694	.035	0.53	300-281	2.812	3.121	.093	5.85
300-075	.750	.831	.035	0.55	300-287	2.875	3.191	.093	11.10
300-087	.875	.986	.042	0.55	300-300	3.000	3.325	.093	4.38
300-090	.901	1.000	.042	0.54	300-306	3.062	3.418	.109	5.27
300-093	.938	1.040	.042	0.54	300-312	3.125	3.488	.109	6.62
300-100	1.000	1.111	.042	0.55	300-315	3.149	3.523	.109	6.62
300-102	1.023	1.136	.042	0.55	300-325	3.250	3.623	.109	6.92
300-106	1.062	1.180	.050	1.09	300-350	3.500	3.890	.109	6.92
300-112	1.125	1.249	.050	0.57	300-354	3.543	3.936	.109	7.11
300-118	1.187	1.300	.050	0.87	300-362	3.625	4.015	.109	7.83
300-125	1.250	1.388	.050	0.65	300-375	3.750	4.140	.109	7.98
300-137	1.375	1.526	.050	0.72	300-387	3.875	4.291	.109	17.48
300-143	1.438	1.596	.050	0.78	300-393	3.938	4.358	.109	8.42
300-150	1.500	1.660	.050	0.78	300-400	4.000	4.424	.109	8.42
300-156	1.562	1.734	.062	1.20	300-412	4.125	4.558	.109	10.10
300-162	1.625	1.804	.062	1.20	300-425	4.250	4.691	.109	13.08
300-165	1.755	1.835	.062	0.84	300-433	4.331	4.756	.109	10.10
300-168	1.688	1.874	.062	2.25	300-450	4.500	4.924	.109	10.10
300-175	1.750	1.942	.062	1.38	300-462	4.625	5.076	.109	11.60
300-187	1.989	2.072	.062	1.42	300-475	4.750	5.204	.109	12.61
300-193	2.056	2.141	.062	1.06	300-500	5.000	5.485	.109	12.90
300-200	2.000	2.210	.062	1.45	300-525	5.250	5.770	.125	13.06
300-206	2.062	2.280	.078	2.27	300-537	5.375	5.910	.125	26.48
300-212	2.125	2.350	.078	2.43	300-550	5.500	6.066	.125	15.14
300-225	2.250	2.490	.078	2.43	300-600	6.000	6.620	.125	23.22
300-237	2.375	2.596	.078	2.43	300-625	6.250	6.895	.156	37.58
300-244	2.440	2.702	.078	2.38	300-650	6.500	7.170	.156	38.73
300-250	2.500	2.775	.078	2.84	300-700	7.000	7.720	.156	86.17

RETAINER RINGS



INCH

EXTERNAL RETAINER RINGS (TRU-ARC TYPE)



Part Number	Shaft Diameter	Ring ID	Ring Thickness	List Price	Part Number	Shaft Diameter	Ring ID	Ring Thickness	List Price
310-025	.250	.225	.025	\$ 0.41	310-175HD	1.750	1.608	.109	\$ 4.13
310-037	.338	.375	.025	0.41	310-200	2.000	1.850	.062	2.15
310-050	.500	.461	.035	0.53	310-212	2.125	1.964	.078	2.50
310-062	.625	.579	.035	0.53	310-225	2.250	2.081	.078	2.50
310-068	.688	.635	.042	0.53	310-250	2.500	2.313	.078	4.70
310-075	.750	.693	.042	0.53	310-262	2.625	2.428	.078	4.73
310-081	.812	.751	.042	0.55	310-275	2.750	2.543	.093	4.78
310-087	.875	.810	.042	0.55	310-287	2.875	2.659	.093	5.06
310-093	.938	.867	.042	0.55	310-300	3.000	2.775	.093	4.82
310-100	1.000	.925	.042	0.57	310-325	3.250	2.920	.093	9.51
310-112	1.125	1.041	.050	0.78	310-350	3.500	3.237	.109	8.94
310-118	1.188	1.098	.050	0.78	310-400	4.000	3.700	.109	17.40
310-125	1.250	1.156	.050	0.67	310-425	4.250	3.989	.109	15.32
310-137	1.375	1.268	.050	0.76	310-437	4.375	4.106	.109	19.57
310-150	1.500	1.387	.050	0.82	310-450	4.500	4.223	.109	19.57
310-162	1.625	1.503	.062	1.11	310-500	5.000	4.692	.109	17.62
310-175	1.750	1.618	.062	1.40	310-575	5.750	5.396	.125	50.18

STYLE RSR RETAINER RINGS



Part Number	I.D.	C/S	List Price	Part Number	I.D.	C/S	List Price
RSR-031	0.280	0.035	\$ 3.47	RSR-202	1.920	0.128	\$ 21.63
RSR-050	0.510	0.041	15.60	RSR-203	2.030	0.125	21.63
RSR-052	0.517	0.053	4.14	RSR-204	1.980	0.070	7.71
RSR-092	0.920	0.080	18.16	RSR-225	2.280	0.125	27.80
RSR-105	1.050	0.075	4.82	RSR-225A	2.186	0.092	17.53
RSR-138	1.380	0.140	25.78	RSR-225B	2.050	0.100	17.53
RSR-150	1.500	0.062	9.08	RSR-250	2.466	0.147	22.47
RSR-150A	1.610	0.062	14.78	RSR-256X125	2.520	0.125	26.49
RSR-151	1.462	0.059	15.69	RSR-260	2.450	0.075	15.48
RSR-152	1.450	0.093	21.30	RSR-275	2.686	0.092	5.64
RSR-175	1.688	0.062	18.96	RSR-3.50X.18X.25	3.140	0.180	36.81
RSR-175X090	1.720	0.090	12.03	RSR-300	2.930	0.128	27.80
RSR-200	2.125	0.074	9.28	RSR-301	2.966	0.147	18.27
RSR-201	1.932	0.092	21.63	RSR-422	3.920	0.156	22.54



RETAINER RING KITS

Each kit has an assortment of retainer rings (Tru-arc, Eaton, or spiral wound style) packed in a reusable plastic box. All rings are made in the USA from carbon spring steel.

Each kit contains: 18 sizes - 9 internal, 9 external • 216 rings per box • 12 rings per size

TRU-ARC

Part Number: 300-310 Kit
List Price: \$ 115.18

PART NUMBER	QTY.	PART NUMBER	QTY.
300-050	12	310-050	12
300-062	12	310-062	12
300-075	12	310-075	12
300-087	12	310-087	12
300-100	12	310-100	12
300-112	12	310-112	12
300-125	12	310-125	12
300-137	12	310-137	12
300-150	12	310-150	12



SPIRAL WOUND

Part Number: SRR Kit
List Price: \$ 208.46

PART NUMBER	QTY.	PART NUMBER	QTY.
WHM-050	12	WSM-050	12
WHM-062	12	WSM-062	12
WHM-075	12	WSM-075	12
WHM-087	12	WSM-087	12
WHM-100	12	WSM-100	12
WHM-112	12	WSM-112	12
WHM-125	12	WSM-125	12
WHM-137	12	WSM-137	12
WHM-150	12	WSM-150	12

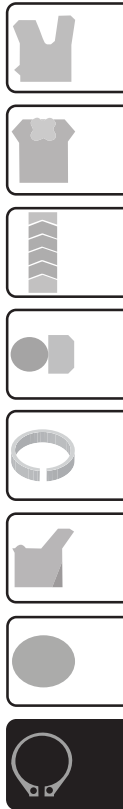
EATON

Part Number: ERR Kit
List Price: \$ 261.88

PART NUMBER	QTY.	PART NUMBER	QTY.
NAN-050	12	XAN-050	12
NAN-062	12	XAN-062	12
NAN-075	12	XAN-075	12
NAN-087	12	XAN-087	12
NAN-100	12	XAN-100	12
NAN-112	12	XAN-112	12
NAN-125	12	XAN-125	12
NAN-137	12	XAN-137	12
NAN-150	12	XAN-150	12



RETAINER RINGS



INCH

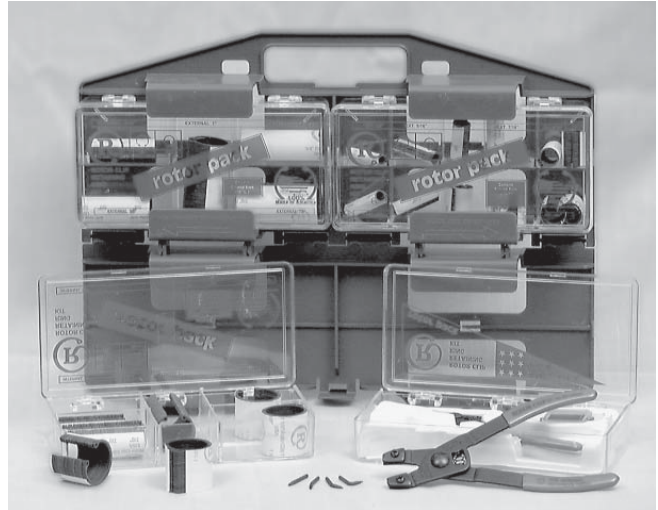
RETAINER RING KITS

RETAINER RINGS

ROTOR PACK KIT

Part Number: RPK 4 Kit
List Price: \$ 230.07

Packaged in four plastic cases with a handy carrying case, our rotor pack kit contains approximately 50 each of 20 common internal/external retaining ring sizes. The internal rings fit housings or bores from 3/8" internal diameter to 1-1/8". External rings accommodate shaft sizes from 1/4" internal diameter to 1-1/8". Two retainer ring installation pliers are also included.



INTERNAL RETAINER RINGS

Part Number: 300 Kit
List Price: \$ 123.10

PART NUMBER	BORE SIZE	QTY.	PART NUMBER	BORE SIZE	QTY.
300-075	0.750	10	300-200	2.000	10
300-087	0.875	10	300-225	2.250	5
300-100	1.000	10	300-250	2.500	5
300-112	1.125	10	300-275	2.750	5
300-125	1.250	10	300-300	3.000	5
300-137	1.375	10	300-350	3.500	5
300-150	1.500	10	300-400	4.000	5
300-162	1.625	10	300-450	4.500	2
300-175	1.750	10	300-500	5.000	2

These assortments contain the most popular size retainer rings, boxed in a handy storage and display case, which will supply your shop, service truck, or parts counter with the sizes you need!

EXTERNAL RETAINER RINGS

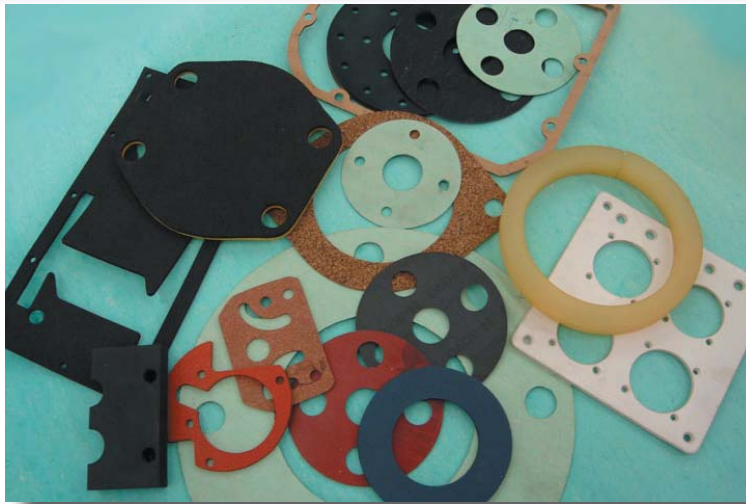
Part Number: 310 Kit
List Price: \$ 65.00

PART NUMBER	SHAFT SIZE	QTY.	PART NUMBER	SHAFT SIZE	QTY.
310-100	1.000	5	310-200	2.000	5
310-125	1.250	5	310-225	2.250	5
310-137	1.375	5	310-250	2.500	5
310-150	1.500	5	310-275	2.750	3
310-175	1.750	5	310-300	3.000	3



INCH

CUSTOM FABRICATED GASKETS



HydraPak Seals, Inc. manufactures all varieties of commercial and industrial rubber gaskets, high temperature gaskets, heat resistant gaskets, as well as different types of hydraulic sealing backups from a wide variety of materials.

Common types of gaskets and gasketing include sheet or die-cut rings, squares and other configurations. In sheet or **die cut gaskets** the gasket is produced from flat sheet material cut prior to assembly. In **gasket stripping** the gasket is cut from sheets, such as weather-stripping material, often with Pressure Sensitive Adhesive applied on one side. They are produced to customer specified lengths, widths, and thickness.

We provide **flange gaskets, full face and ring gaskets, pump gaskets, cover gaskets, gasket kits, diaphragms, manhole and handhole gaskets, spiral wound gaskets, and insulator gaskets.**

A list of common materials used for making gaskets is provided below. However, **HydraPak Seals, Inc. specializes in sourcing any and all kinds of non-standard gasket materials. Please call for quotations.**

Sheet Materials:

• Neoprene	• White FDA Nitrile	• Mil-Spec Rubber
• Nitrile	• Cork/Rubber Blend	• Sintra
• EPDM	• Vegetable Fiber	• Urethane
• Viton®	• Non-Asbestos Fiber	• EMI/RFI Shielding
• Silicone	• Cloth Inserted Neoprene	• PTFE
• Silicone Sponge	• Laminated Fiberglass	• Diaphragm Sheet
• Neoprene Sponge	• LDPE	• PS
• FDA Natural Sponge	• HDPE	• Reb Rubber (SBR)
• Live Gum Rubber	• Poron	• and more



CUSTOM TOOLING AND FABRICATING

STANDARD TOOLING

ANSI Standard Pipe Flange

150lb and 300lb Full-Face Dies-1/2" to 24"

150lb and 300lb Raised-Face Dies-1/2" to 24"

Pump and Valve Cover Dies

I.D.-O.D. Ring Gasket Dies-1/2" to 10"

STRIP TOOLING

Custom widths from 1/4" to 12" capable of stripping thicknesses up to 1/2" thick rubber or 1" thick sponge. Strip Length is limited only by the length of the roll of material.

WATER TREATMENT-FDA Natural (Kushon) Sponge strips with Pressure Sensitive Adhesive applied and hand cut to the desired dimensions for use in **water filtration and treatment** systems.

HAND FABRICATION

Custom-made, Low Volume (less than 10 pcs) gaskets in all the standard materials of almost any size and configuration are a specialty here at Hydrapak Seals. Made in-house by our gasket professionals, manual fabrication is an efficient, cost-effective, timely alternative to high minimums and long lead times of our competitors.

BRAIDED COMPRESSION PACKING

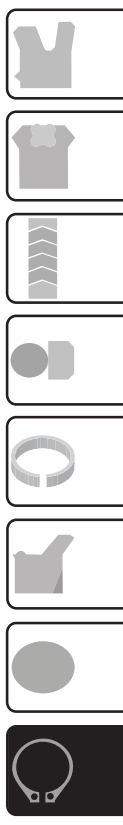
Braided Compression Packing is used as an inexpensive, reliable sealing device for many kinds of pumps and valve stems. It makes packing glands easy to maintain. **Hydrapak Seals, Inc.** stocks the frequent-use styles described below in diameters from 1/16" to 1" thick. We can also source less common styles for more extreme conditions and media.

Graphited Synthetic Yarn/Lubricated is a dense, but flexible **general purpose** packing that adapts well to worn or scored shafts often found in older equipment. It provides an excellent seal against steam, brine, oil, and mild acids and alkalis. This style is suitable for applications in rotary and centrifugal pumps and some valves.

TECHNICAL INFORMATION		
TEMPERATURE LIMITS	Minimum Maximum	-150°F (-100°C) 416°F (230°C)
PRESSURE LIMITS	Rotating reciprocating Static	300 psi (20 bar) 300 psi (20 bar) 725 psi (50 bar)
SHAFT SPEED		2000 fpm (10 m/s)
pH		4-10

Part Number	Weight (lbs)	Feet/lb.	List Price
2255-1/8-1	1	186	\$ 46.97
2255-3/16-1	1	87.2	44.21
2255-1/4-1	1	48	40.97
2255-5/16-1	1	31	44.44
2255-3/8-1	1	21.6	36.89
2255-7/16-1	1	15.7	46.36
2255-1/2-1	1	12	38.21
2255-5/8-1	1	7.7	36.79
2255-5/8-5	5	7.7	146.30
2255-3/4-1	1	5.3	36.75
2255-3/4-5	5	5.3	159.95
2255-3/4-10	10	5.3	258.30

GASKETS



INCH

BRAIDED COMPRESSION PACKING

Lubricated Synthetic Yarn w/PTFE is an excellent multi-service packing with a wide variety of uses. It handles steam, water, solvents, oils, mild acids, alkalies, and many other chemicals. White in color, it will not taint the media it seals. This style is recommended for use in centrifugal, rotary and reciprocating pumps as well as mixers, agitators, and expansion joints.

TECHNICAL INFORMATION

TEMPERATURE LIMITS	Minimum Maximum	-150°F (-100°C) 416°F (230°C)
PRESSURE LIMITS	Rotating Reciprocating Static	300 psi (20 bar) 1160 psi (20 bar) 1450 psi (50 bar)
SHAFT SPEED		2350 fpm (10 m/s)
pH		2-12

Part Number	Weight (lbs)	Feet/lb.	List Price
2019-1/8-1	1	70.9	\$ 77.32
2019-3/16-1	1	41.3	75.32
2019-1/4-1	1	24	64.44
2019-5/16-1	1	17.5	61.78
2019-3/8-1	1	12.2	53.94
2019-1/2-1	1	6.8	52.01
2019-1/2-5	5	6.8	267.75
2019-5/8-1	1	4.4	57.12
2019-5/8-10	10	4.4	346.85
2019-3/4-1	1	3	42.04
2019-3/4-5	5	3	209.13

JOINT SEALANT

UHF Gasket Material is an adhesive backed, "form in place" expanded PTFE gasket material that is primarily used on heat exchangers, irregular flanges, tank lids, and hand holes. Good from **-450 to +600** degrees, it is used in pressures from a full vacuum to 3000 p.s.i., is chemically inert throughout the pH range from 0 to 14, and is FDA suitable (FDA 21 CFR 177.1550).

Part Number Sizes

JS-1/8" x 100'
JS-3/16" x 75'
JS-1/4" x 50'
JS-3/8" x 25'
JS-1/2" x 15'

Part Number Sizes

JS-1/2" x 150'
JS-5/8" x 15'
JS-3/4" x 15'
JS-3/4" x 100'

"NYLON INSERT" LOCKING NUTS FOR USE ON CATERPILLAR® HYDRAULIC CYLINDERS

Note: Part numbers listed below are for reference only. We do not imply that these parts are original Caterpillar® replacement parts.

Heat Treated . . .

All lock nuts are manufactured from the finest quality steel and heat treated to offer superior strength for critical locking applications.

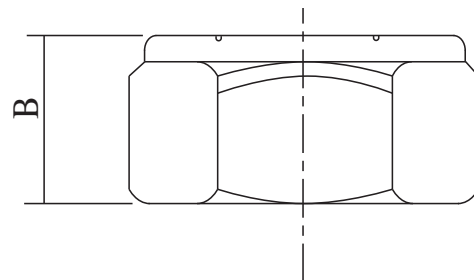
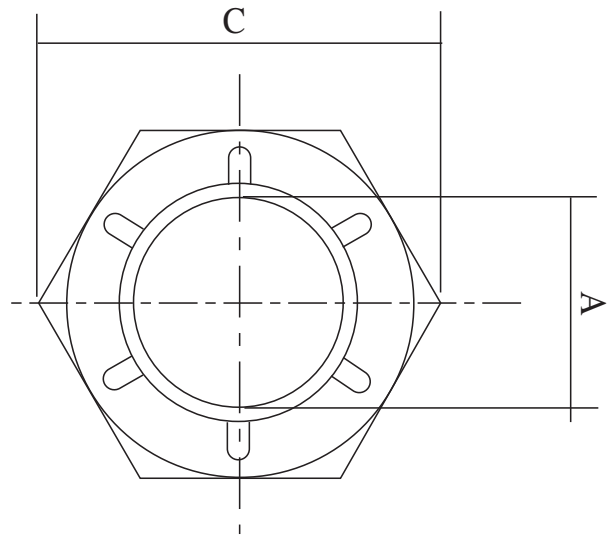
High Temperature Applications . . .

Each lock nut is made with a high temperature nylon locking insert designed to withstand excessive cylinder heat.

Protective Surface Finish . . .

These lock nuts have a special protective finish that will not peel or flake, thus preventing contamination during service.

Part Number	Nominal Dimensions			List Price
	A	B	C	
2J3950	1.500	1.313	2.375	\$ 28.52
2J3247	1.750	1.469	2.750	56.95
2J0564	2.000	1.672	3.125	72.58
3J9545	2.000	2.406	3.125	118.81
5J3488	2.250	1.938	3.500	122.35
3J6899	2.250	2.813	3.500	166.67
2J7686	2.500	2.187	4.000	165.41
3J9449	2.500	2.614	4.000	191.02
4J6888	2.750	2.187	4.000	200.52
4J8734	2.750	3.093	4.000	230.86
7J9250	3.250	3.125	4.500	246.86
3G5022	4.500	4.125	6.500	528.43



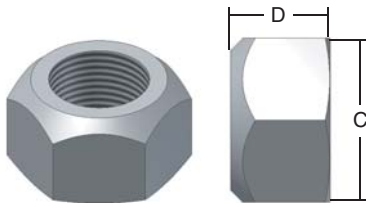
All Lock Nuts have 12 threads/inch.



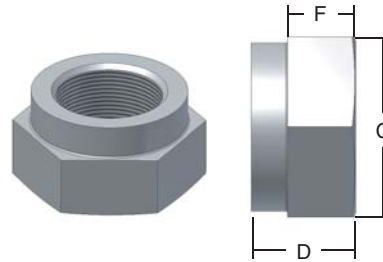
GRADE C LOCKNUTS

These fine-threaded Grade C locknuts are formed from medium carbon, heat-treated steel and are designed to be used with a Grade 8 bolt. Smaller size locknuts employ an automation style collar while the larger ones use a full collar design. Both locknut types are stocked with cadmium and wax plating.

Automation Style



Full Collar Style



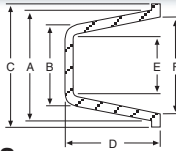
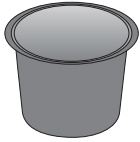
Automation Style

Part Number	Size	Thread Pitch	C Width Across Flats		D Overall Thickness		List Price
			Max	Min	Max	Min	
LN-1/2-13	1/2	13	0.7500	0.736	0.510	0.490	\$ 1.05
LN-1/2-20	1/2	20	0.752	0.741	0.609	0.579	1.16
LN-1-14	1	14	1.5020	1.450	0.887	0.831	4.68
LN-3/4-16	3/4	16	1.1250	1.088	0.665	0.617	3.19
LN-5/8-18	5/8	18	0.9375	0.922	0.645	0.621	1.18
LN-7/8-14	7/8	14	1.3145	1.269	0.922	0.724	4.59

Full Collar Style

Part Number	Size	Thread Pitch	C Width Across Flats		D Overall Thickness		F Hex Height		List Price
			Max	Min	Max	Min	Max	Min	
LN-1-1/2-12	1-1/2	12	2.250	2.175	1.317	1.246	0.885	0.843	\$ 22.63
LN-1-1/4-12	1-1/4	12	1.876	1.812	1.094	1.030	0.719	0.698	13.31
LN-1-1/8-12	1-1/8	12	1.687	1.631	0.999	0.939	0.657	0.636	11.88
LN-1-3/4-12	1-3/4	12	2.625	2.538	1.540	1.460	1.012	0.989	41.39
LN-1-3/8-12	1-3/8	12	2.062	1.994	1.206	1.138	0.795	0.771	22.77
LN-2-12	2	12	3.000	2.900	1.763	1.675	1.158	1.134	88.36

PLASTIC CAP PLUGS

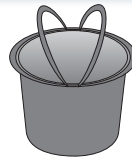


Tapered Caps & Plugs For Misc. Applications

Part Number	A	B	C	D	E	F	List Price
CAP-00	.180	.115	5/16	13/32	.051	.118	\$ 0.20
CAP-0	.240	.175	3/8	3/8	.109	.175	0.31
CAP-1	.302	.240	15/32	3/8	.175	.240	0.21
CAP-1-X	.335	.265	15/32	3/8	.240	.275	0.21
CAP-2	.365	.300	17/32	3/8	.234	.301	0.21
CAP-3	.428	.360	19/32	3/8	.299	.365	0.18
CAP-3-X	.460	.390	5/8	3/8	.325	.396	0.21
CAP-4-X	.512	.447	5/8	3/8	.385	.448	0.04
CAP-5	.547	.490	23/32	1/2	.409	.485	0.04
CAP-5-X	.568	.500	3/4	7/16	.435	.503	0.05
CAP-6	.620	.531	3/4	1/2	.468	.555	0.04
CAP-7	.675	.590	7/8	17/32	.520	.605	0.05
CAP-7-X	.695	.610	27/32	1/5	.549	.634	0.07
CAP-8	.728	.641	7/8	1/2	.8	.665	0.05
CAP-8-X	.754	.675	7/8	5/8	.615	.690	0.05
CAP-9-X	.925	.725	1	3/4	.662	.760	0.05
CAP-10	.848	.750	1-1/32	5/8	.686	.785	0.05
CAP-11	.910	.802	1-3/32	3/4	.740	.846	0.15
CAP-11-X	.931	.820	1-1/8	5/8	.754	.868	0.05
CAP-13	1.091	.966	1-1/4	3/4	.902	1.025	0.15
CAP-13-X	1.145	1.002	1-5/16	3/4	.938	1.079	0.07
CAP-14-X	1.285	1.180	1-7/16	3/4	1.105	1.215	0.50
CAP-15	1.350	1.225	1-1/2	3/4	1.160	1.295	0.32
CAP-18	1.680	1.560	1-7/8	3/4	1.497	1.620	0.14
CAP-21	2.078	1.902	2-1/4	1	1.839	2.015	0.22
CAP-38	1.045	.980	1-1/4	1/2	.916	.984	0.21
CAP-220	2.132	1.980	2-1/4	1	1.915	2.068	0.22
CAP-230	2.330	2.156	2-5/8	1	2.094	2.264	0.62
CAP-240	2.465	2.300	2-5/8	1	2.235	2.400	0.29
CAP-250	2.605	2.395	2-5/8	1	2.331	2.541	0.31

Tapered Caps & Plugs For NPT Style Ports

Part Number	NPT Port Size	OD Size Tapered	HT	Min Std Pkg	List Price
CAP-2-X	1/8	.330/.396	3/8	50	\$ 0.07
CAP-4	1/4	.419/.485	3/8	50	0.07
CAP-6-X	3/8	.550/.631	7/16	50	0.10
CAP-9	1/2	.690/.788	9/16	50	0.10
CAP-12	3/4	.870/.475	5/8	120	0.05
CAP-12-X	3/4	.915/1.040	11/16	25	0.17
CAP-14	1	1.094/1.215	3/4	25	0.17
CAP-15	1	1.225/1.355	3/4	3	0.32
CAP-15-X	1	1.235/1.350	3/4	30	0.20
CAP-17	1-1/4	1.450/1.600	3/4	60	0.10
CAP-17-S	1-1/4	1.513/1.600	1/2	25	0.20
CAP-19	1-1/2	1.735/1.870	3/4	25	0.32
CAP-20-S	1-1/2	1.781/1.805	3/8	25	0.20
CAP-24-S	2	2.230/2.260	1/2	20	0.25



This style cap plug is equipped with a handy fold-down pull ring.

Tapered Caps & Plugs With Pull Ring

Part Number	NPT Port Size	OD Size Tapered	HT	Min Std Pkg	List Price
CAP-PR-9	1/8	.337/.375	1/4	50	\$ 0.10
CAP-PR-12	1/4	.436/.475	1/4	50	0.28
CAP-PR-17	3/8	.552/.615	3/8	50	0.15
CAP-PR-22	1/2	.668/.767	1/2	40	0.17
CAP-PR-27X	3/4	.878/.977	1/2	40	0.20
CAP-PR-32	1	1.113/1.212	1/2	25	0.22
CAP-PR-39	1-1/4	1.505/1.580	1/2	25	0.29
CAP-PR-43	1-1/2	1.780/1.860	1/2	20	0.33
CAP-PR-50	2	2.226/2.258	1/2	20	0.40

CAP PLUG APPLICATION CHART

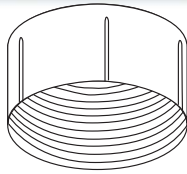
CAP-	NPT		INCH THREAD		METRIC THREAD	
	CAPS	PLUGS	CAPS	PLUGS	CAPS	PLUGS
00				10/32	M2,M2.5	M5
0				1/4	M3,M3.5	M6
1				5/16	M5	M8x1
1-X					M6	
2			15/64	3/8	M7	M10x1.25
2-X		1/8				
3				7/16	M8x1	M12
3-X			3/8			M12x1.25
4	1/8	1/4		1/2	M10x1.25	M14
4-X			7/16			M14x1.5
5			1/2	9/16		
5-X					M12x1.25	M16
6	1/4			5/8		
6-X		3/8	9/16			M18
7			5/8		M14x1.5	M18x1.5
7-X						
8				3/4		M20
8-X	3/8				M16x1.5	M20x1.5
9		1/2				M22
9-X			3/4			M22x1.5
10				7/8	M18x1.5	M24
11	1/2					M24x2
11-X			7/8		M20x1.5	
12		3/4				
12-X				1-1/16	M22x1.5	M27x2
13	3/4				M24x2	
13-X			1-1/16			M30x2
14		1			M27x2	M33
17		1-1/4			M36x3	
17-S				1-5/8		
18	1-1/4		1-5/8	1-3/4	M39x3	
19		1-1/2		1-7/8		
20	1-1/2		1-7/8			
20-S						
21						
220						
230			2-1/4			
24-S		2				
240	2					
250			2-1/2			

MISCELLANEOUS



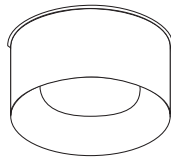
INCH

PLASTIC CAP PLUGS



**Female Threaded Cap Plugs
for J.I.C. Fittings**

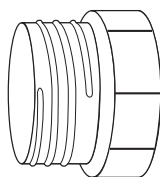
Part Number	Std Thread Size	O.D. Size Tube	Dash Size	Min Std Pkg	List Price
CAP-G-2	7/16-20	1/4	#4	20	\$ 0.17
CAP-G-8	9/16-18	3/8	#6	20	0.17
CAP-G-14	3/4-16	1/2	#8	20	0.20
CAP-G-18	7/8-14	5/8	#10	20	0.20
CAP-G-20	7/8-18	5/8	#10	20	0.44
CAP-G-22	1-1/16-12	3/4	#12	20	0.25
CAP-G-25	1-3/16-12	7/8	#14	20	0.29
CAP-G-27	1-5/16-12	1	#16	20	0.29



O-Ring Face Fitting Caps

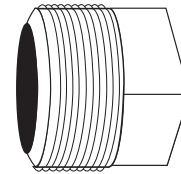
These low density polyethylene caps are designed to fit female o-ring face seals.

Part Number	Thread Size	Min Std Pkg	List Price
CAP-OR-4	9/16-18	35	\$ 0.18
CAP-OR-6	11/16-16	25	0.20
CAP-OR-8	13/16-16	25	0.22
CAP-OR-10	1-14	25	0.28
CAP-OR-12	1-3/16-12	25	0.30
CAP-OR-16	1-7/16-12	15	0.44
CAP-OR-20	1-11/16-12	10	1.12



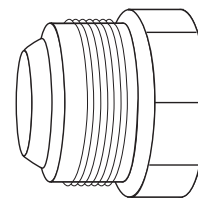
Flat Face Fitting Caps

Part Number	Tube Size OD	Thread Size	Min Std Pkg	List Price
CAP-PDF-40	1/4	9/16-18.	25	\$ 0.28
CAP-PDF-60	3/8	11/16-16	25	0.25
CAP-PDF-80	1/2	13/16-16.	25	0.28
CAP-PDF-100	5/8	1-14	20	0.30
CAP-PDF-120	3/4	1-3/16-12	20	0.36
CAP-PDF-160	1	1-7/16-12	10	1.62



Male Threaded Pipe Plugs (Sq. Top)

Part Number	NPT Port Size	Thread Size	Min Std Pkg	List Price
CAP-P-18	1/8	0.364	25	\$ 0.10
CAP-P-28	1/4	0.477	25	0.17
CAP-P-38	3/8	0.612	25	0.20
CAP-P-48	1/2	0.758	25	0.20
CAP-P-68-H	3/4	0.968	25	0.22
CAP-P-88-H	1	1.214	20	0.90
CAP-TP-13	1-1/4	1.557	5	1.56
CAP-TP-15	1-1/2	1.796	5	1.56



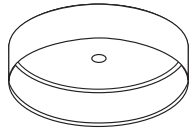
**Male Threaded Cap Plugs
for Flared J.I.C. Fittings**

Part Number	Std Thread Size	OD Size Tube	Dash Size	Min Std Pkg	List Price
CAP-PD-40	7/16-20	1/4	#4	25	\$ 0.30
CAP-PD-50	1/2-20	5/16	#5	25	0.30
CAP-PD-60	9/16-18	3/8	#6	25	0.17
CAP-PD-80	3/4-16	1/2	#8	25	0.17
CAP-PD-100	7/8-14	5/8	#10	25	0.20
CAP-PD-120	1-1/16-12	3/4	#12	25	0.20
CAP-PD-140	1-3/16-12	7/8	#14	20	0.31
CAP-PD-160	1-5/16-12	1	#16	20	0.31
CAP-PD-200	1-5/8-12	1-1/4	#20	15	0.38
CAP-PD-220	1-3/4-12	1-3/8	#22	10	0.96
CAP-PD-240	1-7/8-12	1-1/2	#24	10	0.86



PLASTIC CAP PLUGS

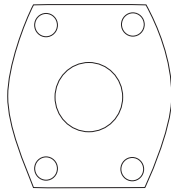
GREASE FITTING CAP



Split Flange Face Plugs

These low density polyethylene plugs protect the faces of split flange connectors

Part Number	Flange Size	Cap Size	Min Std Pkg	List Price
CAP-SF-8	1/2	1.19	50	\$ 0.10
CAP-SF-10	5/8	1.35	50	0.14
CAP-SF-12	3/4	1.50	50	0.15
CAP-SF-16	1	1.75	35	0.17
CAP-SF-20	1-1/4	2.00	35	0.18
CAP-SF-24	1-1/2	2.38	25	0.29
CAP-SF-32	2	2.81	15	0.39
CAP-SF-40	2-1/2	3.31	15	0.54



Bolted Split Flange Protectors

3,000 PSI Flanges
SAE Code 61

Part Number	Port Size	Min Std Pkg	List Price
CAP-8218	1/2	10	\$ 1.17
CAP-8219	3/4	10	1.19
CAP-8220	1	10	1.27
CAP-8221	1-1/4	10	1.35
CAP-8222	1-1/2	10	1.43
CAP-8223	2	10	1.58
CAP-8224	2-1/2	10	1.58

5,000 PSI Flanges
SAE Code 62

CAP-XP-075	3/4	10	\$ 1.19
CAP-XP-100	1	10	1.27
CAP-XP-125	1-1/4	10	1.35
CAP-XP-150	1-1/2	10	1.43
CAP-XP-200	2	10	1.58

Low density polyethane cap plug for use with standard grease fittings.

Part Number	Description	List Price
CAP-GF-10	Cap Plug	\$ 0.15

CAP PLUG KIT

Part Number: **Cap Plug Kit**
List Price: **\$ 152.20**



This sturdy kit, packaged in an unbreakable box, contains 553 cap plugs in the most popular sizes.

Cap Plug Number	QTY
CAP-2-X	50
CAP-4	50
CAP-6-X	50
CAP-9	40
CAP-12-X	25
CAP-14	20
CAP-PD-60	25
CAP-PD-80	25
CAP-PD-100	15
CAP-PD-120	10
CAP-PD-140	5
CAP-PD-160	10

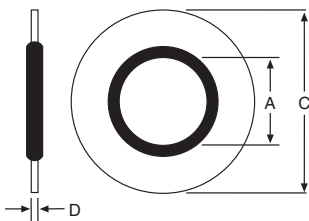
Cap Plug Number	QTY
CAP-G-2	20
CAP-G-8	20
CAP-G-14	20
CAP-G-18	20
CAP-G-22	10
CAP-G-25	12
CAP-G-27	16
CAP-P-28	25
CAP-P-38	25
CAP-P-48	25
CAP-P-68-H	25
CAP-P-88-H	10

MISCELLANEOUS



INCH

STYLE 400 BONDED SEALS

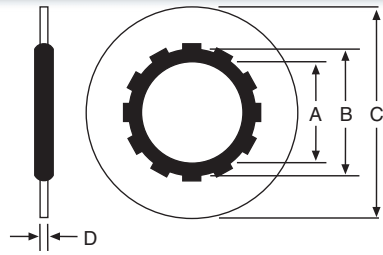


Part Number	A	C	D	List Price
400-001	.115	.250	.048	\$ 1.19
400-002	.157	.286	.048	1.19
400-003	.205	.330	.051	0.92
400-004	.270	.520	.051	0.92
400-005	.270	.525	.048	1.31
400-006	.322	.525	.048	1.31
400-007	.340	.560	.051	0.95
400-020A	.408	.625	.083	0.99
400-008	.443	.723	.083	0.99
400-009	.460	.750	.083	1.02
400-225	.531	.866	.059	1.04
400-021B	.541	.810	.083	1.02
400-010	.585	.875	.083	1.09
400-022BB	.625	.875	.083	1.11
400-011	.650	1.000	.083	1.13
400-023C	.680	.937	.083	1.16
400-012	.715	1.000	.097	1.16
400-024CC	.775	1.060	.097	1.28
400-025D	.848	1.125	.097	1.42
400-026E	.925	1.250	.097	1.58
400-013	.955	1.310	.097	2.75
400-027F	1.065	1.375	.097	1.90
400-240	1.083	1.417	.07	1.94
400-028	1.095	1.520	.097	2.48
400-014	1.150	1.440	.092	2.70
400-029G	1.213	1.500	.097	2.88
400-015	1.280	1.630	.128	3.09
400-031	1.329	1.685	.092	3.41
400-030H	1.334	1.685	.133	2.90
400-016	1.410	1.750	.133	6.66
400-032J	1.690	2.062	.133	5.58
400-033K	1.907	2.307	.103	6.45
400-019	2.030	2.500	.128	10.12
400-034	2.161	2.750	.133	10.90
400-036	2.385	2.875	.133	9.12
400-038	2.625	3.130	.133	14.62
400-039	2.995	3.550	.133	16.38

MISCELLANEOUS

INCH

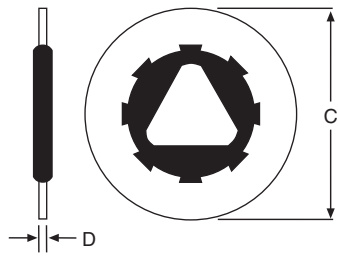
STYLE 600 FACE SEALS



Part Number	Max Screw Size	A Rubber I.D.	B Steel I.D.	C Steel O.D.	D Steel Thick.	List Price
600-8	.164	.184	.234	.366	.041	\$ 1.11
600-10	.177	.197	.247	.438	.050	1.55
600-3/16	.190	.220	.281	.425	.054	1.79
600-7/32	.216	.246	.307	.455	.054	1.79
600-1/4	.250	.280	.341	.519	.054	1.79
600-5/16	.312	.342	.403	.597	.054	1.79
600-3/8	.375	.405	.466	.690	.054	1.79
600-7/16	.437	.467	.538	.769	.075	4.60
600-1/2	.500	.540	.601	.878	.075	5.10
600-9/16	.562	.602	.663	.972	.075	5.10
600-5/8	.625	.665	.726	1.065	.075	6.24
600-3/4	.750	.740	.895	1.322	0.64	5.98

THREAD SEAL

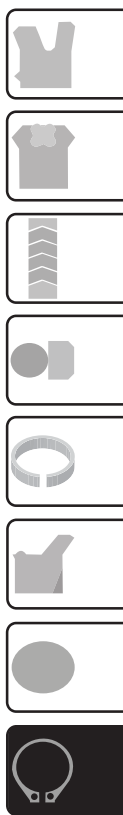
Thread seals provide a positive seal directly against the threads of a bolt. Self-centering and easily installed.



Part Number	C	D	Thread Size	List Price
7500X6	.406	.051	-6	\$ 2.09
7500X8	.406	.051	-8	2.32
7500X10	.469	.051	-10	2.32
7500X1/4	.562	.051	1/4	2.32
7500X5/16	.687	.064	5/16	2.88
7500X3/8	.750	.064	3/8	3.00
7500X7/16	.906	.078	7/16	4.21
7500X1/2	1.000	.078	1/2	4.21
7500X9/16	1.094	.094	9/16	4.44

Part Number	C	D	Thread Size	List Price
7500X5/8	1.187	.094	5/8	\$ 4.54
7500X3/4	1.375	.109	3/4	5.19
7500X7/8	1.562	.109	7/8	15.20
7500X1	1.750	.120	1	14.37
7500X1-1/8	1.875	.120	1-1/8	21.82
7500X1-1/4	2.000	.120	1-1/4	28.89
7500X1-3/8	2.125	.120	1-3/8	30.21
7500X1-1/2	2.250	.120	1-1/2	31.43

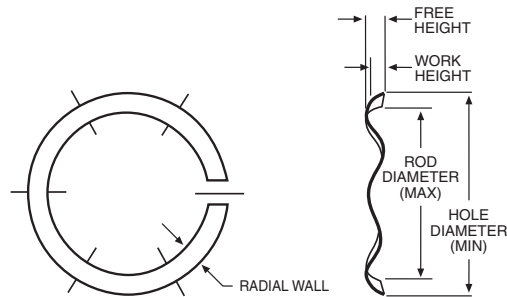
MISCELLANEOUS



INCH

WAVE SPRINGS

Wave Springs offer a convenient method of exerting a pre-load on vee packing where little or no adjustment is available. Because of a low fatigue factor, the spring should provide a proper pre-load through the life of the packing.



Part Number	Hole Diameter (Min)	Rod Diameter (Max)	Free Height	Work Height	Radial Wall	List Price
SSR-0125	1.250	.960	.150	.078	.133	\$ 3.39
SSR-0150	1.500	1.170	.170	.078	.143	4.44
SSR-0175	1.750	1.440	.140	.078	.143	4.44
SSR-0187	1.875	1.560	.150	.078	.143	3.60
SSR-0200	2.000	1.680	.140	.093	.150	3.92
SSR-0225	2.250	1.930	.170	.093	.150	4.14
SSR-0237	2.375	1.990	.160	.093	.178	4.27
SSR-0250	2.500	2.120	.170	.093	.178	4.50
SSR-0262	2.625	2.240	.190	.093	.178	5.58
SSR-0275	2.750	2.340	.170	.109	.188	4.94
SSR-0300	3.000	2.590	.190	.109	.188	5.30
SSR-0312	3.120	2.710	.210	.109	.188	5.24
SSR-0325	3.250	2.750	.200	.109	.233	5.68
SSR-0350	3.500	3.000	.230	.109	.233	10.42
SSR-0362	3.625	3.120	.240	.109	.233	10.65
SSR-0375	3.750	3.250	.260	.109	.233	6.65
SSR-0425	4.250	3.740	.210	.109	.233	21.01
SSR-0462	4.625	4.125	.230	.109	.233	8.20
SSR-0512	5.125	4.610	.340	.125	.233	29.41

WIND-IN LOCK WIRES

Part Number	Thickness	Length	List Price
LW-5.40X.09-H	3/32 round	5.40	\$ 60.13
LW-093-1262	3/32 sq.	12-5/8	18.43
MARION-35240	1/8 sq.	10-1/4	6.63
MARION-35250	1/8 sq.	13-3/8	7.03
MARION-35260	1/8 sq.	16-3/8	7.61
MARION-35270	1/8 sq.	19-1/4	7.76
MARION-1031	3/16 sq.	21.00	12.83
1/8 RD WIRE	1/8 round	11	1.52

NYLON PLUGS

These nylon plugs are used with headnut set screws to insure that there is no damage to the headnut threads.


Part Number	Diameter	Length	List Price
NYPLUG-125-125	1/8	1/8	\$ 0.54
NYPLUG-125-156	1/8	5/32	0.54
NYPLUG-125-875	1/8	7/8	0.40
NYPLUG-187-109	3/16	7/64	0.40
NYPLUG-187-187	3/16	3/16	0.54
NYPLUG-187-250	3/16	1/4	0.55
NYPLUG-250-125	1/4	1/8	0.54
NYPLUG-250-187	1/4	3/16	0.54
NYPLUG-250-250	1/4	1/4	0.44
NYPLUG-312-125	5/16	1/8	0.54
NYPLUG-312-250	3/16	1/4	1.63
NYPLUG-375-250	3/8	1/4	0.54
NYPLUG-500-875-125H	1/2	7/8	3.97

MANUAL BLEEDER VALVES

Part Number	Thread Size	List Price
WH705	1/8 NPT	\$ 4.61
A2688	1/8 NPT	4.61

NYLON PLUG KIT

Part Number: Nylon Plug Kit
List Price: \$ 92.78

 220 Pieces 11 Sizes	Nyplug-125-125 1/8" x 1/8" 20 pcs.	Nyplug-187-109 3/16" x 7/64" 20 pcs.	Nyplug-250-125 1/4" x 1/8" 20 pcs.	
	Nyplug-125-156 1/8" x 5/32" 20 pcs.	Nyplug-187-187 3/16" x 3/16" 20 pcs.	Nyplug-250-187 1/4" x 3/16" 20 pcs.	Nyplug-312-125 5/16" x 1/8" 20 pcs.
	Nyplug-125-875 1/8" x 7/8" 20 pcs.	Nyplug-187-250 3/16" x 1/4" 20 pcs.	Nyplug-250-250 1/4" x 1/4" 20 pcs.	Nyplug-375-250 3/8" x 1/4" 20 pcs.

FILTER VENT PLUGS



These plugs are used to allow air to pass in and out of the non-pressurized end of a single acting cylinder.

Part Number	NPT Port Size	List Price
FV-.125	1/8	\$ 3.86
FV-.250	1/4	5.24
FV-.375	3/8	6.33
FV-.500	1/2	7.60
FV-.750	3/4	11.69
FV-1.000	1	13.99

TEFLON TAPE

Part Number: Teflon Tape
List Price: \$ 1.19



1/2" Wide by 520" Roll



O-RING LUBRICANT

LOCTITE

Part Number	Package Size	List Price
O-ring Lube	4 oz tube (petroleum)	\$ 10.22
Super O-ring Lube	2 oz tube (silicone)	24.72

The O-Lube is a petroleum grease which will aid in the installation of seals. The Super O-Lube is a silicone base lubricant for plastics and rubber. These lubes work well in most sealing service within a -20° to +300° F temperature range.

LOCTITE

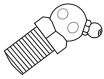
Part Number	Application	List Price
LOCTITE-20029	Super Lube w/ Teflon	\$ 6.48
LOCTITE-21937	Super Glue Dispenser	4.97
LOCTITE-22221	Th.Lkr Low Strgth/Sm Screws 10 ml bottle	13.56
LOCTITE-24078	Threadlocker Medium 50 ml bottle	41.37
LOCTITE-24205	Removable Threadlocker 0.5 ml bottle	1.85
LOCTITE-24221	Removable Threadlocker 10 ml bottle	13.56
LOCTITE-24231	Removable Threadlocker 50 ml bottle	37.70
LOCTITE-26221	Lock Studs Threadlocker 10 ml bottle	13.56
LOCTITE-26231	Lock Studs Threadlocker 50 ml bottle	37.70
LOCTITE-26241	Threadlocker 262 High Strength 250 ml	130.97
LOCTITE-26772	266 Th.Lckr Med to High Strength 10 ml	15.77
LOCTITE-27105	High Strength Threadlocker 0.5 ml bottle	1.85
LOCTITE-27141	High Strength Threadlocker 250 ml bottle	369.72
LOCTITE-27741	277 Th.Lckr 250 ml H strength LRG fasten	112.01
LOCTITE-28654	Form-A-Thread Repair Kit	15.52
LOCTITE-29021	Penetrating Threadlocker 10 ml bottle	13.56
LOCTITE-29031	Penetrating Threadlocker 50 ml bottle	37.70
LOCTITE-30515	Form-A-Gasket #2 7 oz tube	9.34
LOCTITE-30525	Hi-Tack Gasket Sealant 16 oz can	15.02
LOCTITE-30526	Hi-Tack Gasket Threadlocker 50 ml bottle	9.44
LOCTITE-30527	Belt Dressing 12 oz Aerosol	4.97
LOCTITE-30534	Thread Sealant w/ Tef 4 oz can	6.56
LOCTITE-30543	White Lithium Grease 10.75 oz Aerosol	6.22
LOCTITE-30544	All-Purpose Spray Adhesive 10.5 Aerosol	7.70
LOCTITE-30548	Pro Strength Parts Cleaner 19 oz	6.98
LOCTITE-30557	Pipe Joint Compound 16 oz can	8.88

Part Number	Application	List Price
LOCTITE-30560	Blue RTV Silicone Adh. 80 ml tube, carded	\$ 5.16
LOCTITE-30561	Thread Sealant w/ Tef 16 oz can	16.00
LOCTITE-37127	PST 561 Pipe Sealant Stick 19 gm	12.99
LOCTITE-37229	C5A Copper Anti-Seize Stick 20 mg	5.81
LOCTITE-37230	Silver Grade Anti-Seize Stick 20 gm	5.81
LOCTITE-37684	248 Medium Strength Stick 9gm	13.78
LOCTITE-37685	268 High Strength Stick 9gm	13.78
LOCTITE-38402	7649 Primer N (1.75 oz bottle)	18.10
LOCTITE-39152	Quickstix 548 Gasket Elim. 18 gm stick	18.36
LOCTITE-39156	Qckstx 534 Hi-Tack Gasket Dress. 19 gm	9.85
LOCTITE-39916	Urethane Sealant 10.2 oz cartridge	11.88
LOCTITE-40140	Prism 401 Surface Adhesive 20gm bottle	20.70
LOCTITE-46551	404 Quick Set Instant Adhesive 1/3 oz	22.86
LOCTITE-49504	Super Glue Instant Adhesive 3gm tube	3.64
LOCTITE-49550	Super Glue Instant Adhesive 1oz bottle	20.36
LOCTITE-51221	Penetrating Oil 12 oz Aerosol	6.66
LOCTITE-51831	50 ml Tube Gasketing Adhesive Sealant	17.70
LOCTITE-54531	Hyd/Pneum Thread Sealant 50 ml tube	37.53
LOCTITE-56747	Hi-temp Loctite Threa Sealant	19.62
LOCTITE-56931	Thread Sealant, Hydraulic Sealant 50ml	37.53
LOCTITE-60921	Retaining Compound gen. purpose 50ml	13.56
LOCTITE-60931	Retaining Compound 50 ml bottle	37.70
LOCTITE-76764	Anti Seize Lubricant 16 oz brush can	21.04
LOCTITE-79040	Gasket Remover 18 oz Aerosol	15.13
LOCTITE-80725	Plastic Pipe Sealant 2 oz tube	5.24
LOCTITE-82244	Natural Blue Cleaner & Degreaser 4 oz	3.09
LOCTITE-82249	Natural Blue Cleaner & Degreaser 24 oz	10.69
LOCTITE-82251	Natural Blue Degreaser 1 gal bottle	44.89

GREASE FITTING KIT

Part Number: Grease Fitting Kit
List Price: \$ 56.11




 32 Pieces	1/8" NPT Straight 6 pcs.	1/4" - 28 Straight 6 pcs.
	3/16" Drive Straight 4 pcs.	1/8"- NPT 45 1/8"-NPT 90 3 pcs. each
	1/4"- 28 45 1/4"- 28 90 3 pcs. each	5/16" Drive Straight 4 pcs.

Part Number	Description	List Price
GF-125NPTS	1/8" NPT STRAIGHT	\$ 0.77
GF-125NPT45	1/8" NPT 45°	1.54
GF-125NPT90	1/8" NPT 90°	1.54
GF-187DS	3/16" DRIVE STRAIGHT	0.69
GF-250-28S	1/4"-28 STRAIGHT	0.53
GF-250-28-45	1/4"-28 45°	1.37
GF-250-28-90	1/4"-28 90°	1.37
GF-312DS	5/16" DRIVE STRAIGHT	0.88

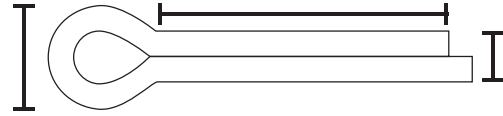
WOODRUFF KEY KIT

Part Number: Woodruff Key Kit
List Price: \$ 65.78



 65 Pieces	1/8" X 1/2" No. 3 16 pcs.	1/8" X 5/8" No. 5 15 pcs.
	3/32" X 5/8" No. 6 15 pcs.	3/16" X 3/4" No. 9 10 pcs.
	1/4" X 7/8" No. A 5 pcs.	1/4" X 1" No. 15 4 pcs.

COTTER PINS




Part Number	Length	A	B	List Price
CP-1X3/32	1	.082	3/16	\$ 0.35
CP-1-1/4X1/8	1-1/4	.115	1/4	0.31
CP-1-1/2X5/32	1-1/2	.150	5/16	0.52
CP-1-3/4X3/16	1-3/4	3/16	.390	0.38
CP-2X3/16	2	.176	3/8	0.46
CP-2X1/4	2	.225	1/2	0.53
CP-2-1/2X5/32	2-1/2	5/32	.357	0.60
CP-2-1/2X1/8	2-1/2	.115	1/4	0.63
CP-2-1/2X3/16	2-1/2	.176	3/8	0.68
CP-2-1/2X1/4	2-1/2	.225	1/2	1.13
CP-3X5/32	3	.150	5/16	0.67
CP-3X1/4	3	1/4	.520	1.21
CP-3-1/2X1/4	3-1/2	.225	1/2	1.39
CP-4X1/4	4	.225	1/2	1.44
CP-5X1/4	5	.225	1/2	2.32
CP-6X5/16	6	.280	5/8	4.42

COTTER PIN KIT

Part Number: Cotter Pin Kit
List Price: \$ 29.48



 555 Pieces	1/16" X 1" 150 pcs.	3/32" X 1" 150 pcs.
	3/32" X 1-1/2" 100 pcs.	1/8" X 1-1/4" 75 pcs.
	1/8" X 2" 50 pcs.	5/32" X 2-1/2" 30 pcs.

MISCELLANEOUS



INCH

METRIC / INCH CONVERSION TABLE

FRACTIONS, DECIMALS AND MILLIMETERS

Inches			Inches			Inches			Inches		
Fractions	Decimals	M M	Fractions	Decimals	M M	Fractions	Decimals	M M	Fractions	Decimals	M M
—	.0004	.01	25/32	.781	19.844	—	2.165	55.0	3-11/16	3.6875	93.663
—	.001	.10	—	.7874	20.0	2-3/16	2.1875	55.563	—	3.7008	94.0
—	.004	.25	51/64	.797	20.241	—	2.2047	56.0	3-23/32	3.719	94.456
1/64	.0156	.397	13/16	.8125	20.638	2-7/32	2.219	56.356	—	3.7401	95.0
—	.0197	.50	—	.8268	21.0	—	2.244	57.0	3-3/4	3.750	95.250
—	.0295	.75	53/64	.828	21.034	2-1/4	2.250	57.150	—	3.7795	96.0
1/32	.03125	.794	27/32	.844	21.431	2-9/32	2.281	57.944	3-25/32	3.781	96.044
—	.0394	1.0	55/64	.859	21.828	—	2.2835	58.0	3-13/16	3.8125	96.838
3/64	.0469	1.191	—	.8661	22.0	2-5/16	2.312	58.738	—	3.8189	97.0
—	.059	1.5	7/8	.875	22.225	—	2.3228	59.0	3-27/32	3.844	97.631
1/16	.062	1.588	57/64	.8906	22.622	2-11/32	2.344	59.531	—	3.8583	98.0
5/64	.0781	1.984	—	.9055	23.0	—	2.3622	60.0	3-7/8	3.875	98.425
—	.0787	2.0	29/32	.9062	23.019	2-3/8	2.375	60.325	—	3.8976	99.0
3/32	.094	2.381	59/64	.922	23.416	—	2.4016	61.0	3-29/32	3.9062	99.219
—	.0984	2.5	15/16	.9375	23.813	2-13/32	2.406	61.119	—	3.9370	100.0
7/64	.109	2.778	—	.9449	24.0	2-7/16	2.438	61.913	3-15/16	3.9375	100.013
—	.1181	3.0	61/64	.953	24.209	—	2.4409	62.0	3-31/32	3.969	100.806
1/8	.125	3.175	31/32	.969	24.606	2-15/32	2.469	62.706	—	3.9764	101.0
—	.1378	3.5	—	.9843	25.0	—	2.4803	63.0	4	4.000	101.600
9/64	.141	3.572	63/64	.9844	25.003	2-1/2	2.500	63.500	4-1/16	4.062	103.188
5/32	.156	3.969	1	1.000	25.400	—	2.5197	64.0	4-1/8	4.125	104.775
—	.1575	4.0	—	1.0236	26.0	2-17/32	2.531	64.294	—	4.1338	105.0
11/64	.172	4.366	1-1/32	1.0312	26.194	—	2.559	65.0	4-3/16	4.1875	106.363
—	.177	4.5	1-1/16	1.062	26.988	2-9/16	2.562	65.088	4-1/4	4.250	107.950
3/16	.1875	4.763	—	1.063	27.0	2-19/32	2.594	65.881	4-5/16	4.312	109.538
—	.1969	5.0	1-3/32	1.094	27.781	—	2.5984	66.0	—	4.3307	110.0
13/64	.203	5.159	—	1.1024	28.0	2-5/8	2.625	66.675	4-3/8	4.375	111.125
—	.2165	5.5	1-1/8	1.125	28.575	—	2.638	67.0	4-7/16	4.438	112.713
7/32	.219	5.556	—	1.1417	29.0	2-21/32	2.656	67.469	4-1/2	4.500	114.300
15/64	.234	5.953	1-5/32	1.156	29.369	—	2.6772	68.0	—	4.5275	115.0
—	.2362	6.0	—	1.1811	30.0	2-11/16	2.6875	68.263	4-9/16	4.562	115.888
1/4	.250	6.350	1-3/16	1.1875	30.163	—	2.7165	69.0	4-5/8	4.625	117.475
—	.2559	6.5	1-7/32	1.219	30.956	2-23/32	2.719	69.056	4-11/16	4.6875	119.063
17/64	.2656	6.747	—	1.2205	31.0	2-3/4	2.750	69.850	—	4.7244	120.0
—	.2756	7.0	1-1/4	1.250	31.750	—	2.7559	70.0	4-3/4	4.750	120.650
9/32	.281	7.144	—	1.2598	32.0	2-25/32	2.781	70.6439	4-13/16	4.8125	122.238
—	.2953	7.5	1-9/32	1.281	32.544	—	2.7953	71.0	4-7/8	4.875	123.825
19/64	.297	7.541	—	1.2992	33.0	2-13/16	2.8125	71.4376	—	4.9212	125.0
5/16	.312	7.938	1-5/16	1.312	33.338	—	2.8346	72.0	4-15/16	4.9375	125.413
—	.315	8.0	—	1.3386	34.0	2-27/32	2.844	72.2314	5	5.000	127.000
21/64	.328	8.334	1-11/32	1.344	34.131	—	2.8740	73.0	—	5.1181	130.0
—	.335	8.5	1-3/8	1.375	34.925	2-7/8	2.875	73.025	5-1/4	5.250	133.350
11/32	.344	8.731	—	1.3779	35.0	2-29/32	2.9062	73.819	5-1/2	5.500	139.700
—	.3543	9.0	1-13/32	1.406	35.719	—	2.9134	74.0	—	5.5118	140.0
23/64	.359	9.128	—	1.4173	36.0	2-15/16	2.9375	74.613	5-3/4	5.750	146.050
—	.374	9.5	1-7/16	1.438	36.513	—	2.9527	75.0	—	5.9055	150.0
3/8	.375	9.525	—	1.4567	37.0	2-31/32	2.969	75.406	6	6.000	152.400
25/64	.391	9.922	1-15/32	1.469	37.306	—	2.9921	76.0	6-1/4	6.250	158.750
—	.3937	10.0	—	1.4961	38.0	3	3.000	76.200	—	6.2992	160.0
13/32	.406	10.319	1-1/2	1.500	38.100	3-1/32	3.0312	76.994	6-1/2	6.500	165.100
—	.413	10.5	1-17/32	1.531	38.894	—	3.0315	77.0	—	6.6929	170.0
27/64	.422	10.716	—	1.5354	39.0	3-1/16	3.062	77.788	6-3/4	6.750	171.450
—	.4331	11.0	1-9/16	1.562	39.688	—	3.0709	78.0	7	7.000	177.800
7/16	.438	11.113	—	1.5748	40.0	3-3/32	3.094	78.581	—	7.0866	180.0
29/64	.453	11.509	1-19/32	1.594	40.481	—	3.1102	79.0	—	7.4803	190.0
15/32	.469	11.906	—	1.6142	41.0	3-1/8	3.125	79.581	7-1/2	7.500	190.500
—	.4724	12.0	1-5/8	1.625	41.275	—	3.1496	80.0	—	7.8740	200.0
31/64	.484	12.303	—	1.6535	42.0	3-5/32	3.156	80.169	8	8.000	203.200
—	.492	12.5	1-21/32	1.6562	42.069	3-3/16	3.1875	80.963	—	8.2677	210.0
1/2	.500	12.700	1-11/16	1.6875	42.863	—	3.1890	81.0	8-1/2	8.500	215.900
—	.5118	13.0	—	1.6929	43.0	3-7/32	3.219	81.756	—	8.6614	220.0
33/64	.5156	13.097	1-23/32	1.719	43.656	—	3.2283	82.0	9	9.000	228.600
17/32	.531	13.494	—	1.7323	44.0	3-1/4	3.250	82.550	—	9.0551	230.0
35/64	.547	13.891	1-3/4	1.750	44.450	—	3.2677	83.0	—	9.4488	240.0
—	.5512	14.0	—	1.7717	45.0	3-9/32	3.281	83.344	9-1/2	9.500	241.300
9/16	.563	14.288	1-25/32	1.781	45.244	—	3.3071	84.0	—	9.8425	250.0
—	.571	14.5	—	1.8110	46.0	3-5/16	3.312	84.1377	10	10.000	254.001
37/64	.578	14.684	1-13/16	1.8125	46.038	3-11/32	3.344	84.9314	—	10.2362	260.0
—	.5906	15.0	1-27/32	1.844	46.831	—	3.3464	85.0	—	10.6299	270.0
19/32	.594	15.081	—	1.8504	47.0	3-3/8	3.375	85.725	11	11.000	279.401
39/64	.609	15.478	1-7/8	1.875	47.625	—	3.3858	86.0	—	11.0236	280.0
5/8	.625	15.875	—	1.8898	48.0	3-13/32	3.406	86.519	—	11.4173	290.0
—	.6299	16.0	1-29/32	1.9062	48.419	—	3.4252	87.0	—	11.8110	300.0
41/64	.6406	16.272	—	1.9291	49.0	3-7/16	3.438	87.313	12	12.000	304.801
—	.6496	16.5	1-15/16	1.9375	49.213	—	3.4648	88.0	13	13.000	330.201
21/32	.658	16.669	—	1.9685	50.0	3-15/32	3.469	88.108	—	13.7795	350.0
—	.6693	17.0	1-31/32	1.969	50.006	3-1/2	3.500	88.900	14	14.000	355.601
43/64	.672	17.066	2	2.000	50.800	—	3.5039	89.0	15	15.000	381.001
11/16	.6875	17.463	—	2.0079	51.0	3-17/32	3.531	89.694	—	15.7480	400.0
45/64	.703	17.859	2-1/32	2.03125	51.594	—	3.5433	90.0	16	16.000	406.401
—	.7087	18.0	—	2.0472	52.0	3-9/16	3.562	90.4877	17	17.000	431.801
23/32	.719	18.256	2-1/6	2.062	52.388	—	3.5827	91.0	—	17.7165	450.0
—	.7283	18.5	—	2.0866	53.0	3-19/32	3.594	91.281	18	18.000	457.201
47/64	.734	18.653	2-3/32	2.094	53.181	—	3.622	92.0	19	19.000	482.601
—	.7480	19.0	2-1/8	2.125	53.975	3-5/8	3.625	92.075	—	19.6850	500.0
3/4	.750	19.050	—	2.126	54.0	3-21/32	3.656	92.869	20	20.000	508.001
49/64	.7656	19.447	2-5/32	2.156	54.769	—	3.6614	93.0	—	—	—

MISCELLANEOUS

INCH